

INITIAL RECEIPT

**United States Department of the Interior
Bureau of Land Management
DIV OF LANDS, MINRLS & ENERGY
ONE N CENTRAL AVE
PHOENIX, AZ 85004 -4427
Phone: 602-417-9200**

Receipt	
No:	4793405

Transaction #: 4920551	
Date of Transaction: 08/31/2020	
CUSTOMER:	
BELL RESOURCES (NEVADA) CORP 4750 N BONANZA AVE TUCSON, AZ 85749-8293 US	

LINE #	QTY	DESCRIPTION	REMARKS	UNIT PRICE	TOTAL
1	31.00	LOCATABLE MINERALS / MINING CLAIMS- NEW, UNADJUD, ONE OR MORE AUTH NOS / NEW MINING CLAIM PROCESSING FEE CASES: AMC460863/\$20.00, AMC460864/\$20.00, AMC460865/\$20.00, AMC460866/\$20.00, AMC460867/\$20.00, AMC460868/\$20.00, AMC460869/\$20.00, AMC460870/\$20.00, AMC460871/\$20.00, AMC460872/\$20.00, AMC460873/\$20.00, AMC460874/\$20.00, AMC460875/\$20.00, AMC460876/\$20.00, AMC460877/\$20.00, AMC460878/\$20.00, AMC460879/\$20.00, AMC460880/\$20.00, AMC460881/\$20.00, AMC460882/\$20.00, AMC460883/\$20.00, AMC460884/\$20.00, AMC460885/\$20.00, AMC460886/\$20.00, AMC460887/\$20.00, AMC460888/\$20.00, AMC460889/\$20.00, AMC460890/\$20.00, AMC460891/\$20.00, AMC460892/\$20.00, AMC460893/\$20.00		- n/a -	620.00
2	31.00	LOCATABLE MINERALS / MINING CLAIMS- NEW, UNADJUD, ONE OR MORE AUTH NOS / NEW MINING CLAIMS LOCATION FEE CASES: AMC460863/\$40.00, AMC460864/\$40.00, AMC460865/\$40.00, AMC460866/\$40.00, AMC460867/\$40.00, AMC460868/\$40.00, AMC460869/\$40.00, AMC460870/\$40.00, AMC460871/\$40.00, AMC460872/\$40.00, AMC460873/\$40.00, AMC460874/\$40.00, AMC460875/\$40.00, AMC460876/\$40.00,		- n/a -	1240.00

ENTERED
SEP 03 2020
BY: ZDC

		AMC460877/\$40.00, AMC460878/\$40.00, AMC460879/\$40.00, AMC460880/\$40.00, AMC460881/\$40.00, AMC460882/\$40.00, AMC460883/\$40.00, AMC460884/\$40.00, AMC460885/\$40.00, AMC460886/\$40.00, AMC460887/\$40.00, AMC460888/\$40.00, AMC460889/\$40.00, AMC460890/\$40.00, AMC460891/\$40.00, AMC460892/\$40.00, AMC460893/\$40.00			
3	31.00	LOCATABLE MINERALS / MINING CLAIMS-NEW, UNADJUD, ONE OR MORE AUTH NOS / NEW MINING CLAIMS MAINTENANCE FEE CASES: AMC460863/\$165.00, AMC460864/\$165.00, AMC460865/\$165.00, AMC460866/\$165.00, AMC460867/\$165.00, AMC460868/\$165.00, AMC460869/\$165.00, AMC460870/\$165.00, AMC460871/\$165.00, AMC460872/\$165.00, AMC460873/\$165.00, AMC460874/\$165.00, AMC460875/\$165.00, AMC460876/\$165.00, AMC460877/\$165.00, AMC460878/\$165.00, AMC460879/\$165.00, AMC460880/\$165.00, AMC460881/\$165.00, AMC460882/\$165.00, AMC460883/\$165.00, AMC460884/\$165.00, AMC460885/\$165.00, AMC460886/\$165.00, AMC460887/\$165.00, AMC460888/\$165.00, AMC460889/\$165.00, AMC460890/\$165.00, AMC460891/\$165.00, AMC460892/\$165.00, AMC460893/\$165.00		- n/a -	5115.00
4	1.00	LOCATABLE MINERALS / MINING CLAIMS-NOT NEW-UNADJUD, ONE AUTH NO. ONLY / MINING CLAIM MONEY RECEIVED CASES: AMC459716/\$21120.00	MAINT 2021	- n/a -	21120.00
TOTAL:					\$28,095.00

PAYMENT INFORMATION			
NOTE: Items will appear on credit card statement as "Bureau of Land Mgmt CO".			
1	AMOUNT:	403.00	POSTMARKED: N/A
	TYPE:	CREDIT CARD	RECEIVED: 08/31/2020
	NAME:	BELL RESOURCES (NEVADA) CORP 4750 N BONANZA AVE TUCSON AZ 85749-8293 US	
	CARD NO:	XXXXXXXXXXXX8757	AUTH CODE: 009947
	NAME ON CARD:	TIMOTHY M MARSH	
	SIGNATURE:	BY MAIL	

2	AMOUNT:	27692.00	POSTMARKED:	N/A
	TYPE:	CHECK	RECEIVED:	08/28/2020
	CHECK NO:	1549		
	NAME:	BELL RESOURCES (NEVADA) CORP 4750 N BONANZA AVE TUCSON AZ 85749-8293 US		

REMARKS

This receipt was generated by the automated BLM Collections and Billing System and is a paper representation of a portion of the official electronic record contained therein.

CORRESPONDENCE

TRANSFERS

MAINTENANCE FEES
WAIVERS
POL/NOI

Timothy M. Marsh
Bell Resources (Nevada) Corporation
4750 N. Bonanza Ave.
Tucson, AZ 85749

August 24, 2020

459716
460863

United States Department of Interior
Bureau of Land Management
Records Section
One North Central Avenue
Suite 800
Phoenix, Arizona 85011

Dear Sir or Madam,

Bell Resources (Nevada) Corporation located 31 new lode claims late in the 2020 assessment year. Notices for these 31 new claims are being presented herein for recording with the BLM, accompanied by full payment for new lode mining claims (31@ \$212.00/ea = \$6,572.00).

Another 97 previously recorded lode claims along with the new 31 lode claims referenced above (128 in total) are being paid herewith for 2021 assessment fees (128@ \$165.00/ea = \$21,120.00).

Enclosed therefore please find check # 1549 in the amount of US\$ 27,692.00 to cover these fees.

The name, BLM serial number (where assigned), book and page or index number of recording of the location notice in the official records of Mohave County, Arizona, are set forth in **Exhibit "A"** attached hereto and by this reference incorporated herein.

Sincerely,


Timothy M. Marsh
President
Bell Resources (Nevada) Corporation
Telephone 480-570-7077

Cc: file



RECEIVED
BLM AZ STATE OFFICE
2020 AUG 28 A 8:03
PHOENIX, ARIZONA

August 24, 2020

United States Department of Interior
Bureau of Land Management
Records Section
One North Central Avenue
Suite 800
Phoenix, Arizona 85011

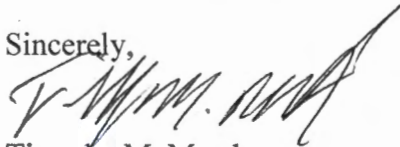
Notice of Intent
ANNUAL CLAIM MAINTENANCE FEES for 2020/2021
By BELL RESOURCES (NEVADA) CORPORATION

To Whom It May Concern:

The Final Rule as published in the Federal Register implements provisions of the Interior Department and related agencies, *that a Statutorily Authorized Adjustment effective July 1, 2019 that requires an annual rental fee of \$165.00* for each unpatented mining claim and site located and held under the General Mining Law of 1872.

This will serve as notice that **BELL RESOURCES (NEVADA) CORPORATION**, whose address for purposes of this filing is 4750 North Bonanza Avenue, Tucson, Arizona 85749 intends to hold the mining claims and/or mill sites described in Exhibit "A" attached hereto for the assessment years **2020/2021**, by payment of the annual claim maintenance fee of **\$165.00** per claim or site. Payment of **\$21,120.00** is made herewith for such assessment years for each of the unpatented lode claims and sites. The name, BLM serial number, book and page or index number of recording of the location notice in the official records of Mohave County, Arizona, of which are set forth in **Exhibit" A"** attached hereto and by this reference incorporated herein.

Sincerely,



Timothy M. Marsh
President
Bell Resources (Nevada) Corporation
Telephone 480-570-7077

Cc: file

RECEIVED
BLM AZ STATE OFFICE
2020 AUG 28 A 8: 03
PHOENIX, ARIZONA
#4793405

EXHIBIT A
BELL RESOURCES (NEVADA) CORPORATION

Notice of Intent to Hold the following unpatented mining claims for 2020-2021

No.	Claim	BLMAMC	County	Fee Number
1	SAY-1	AMC459716	Mohave	2020021220
2	SAY-2	AMC459717	Mohave	2020021221
3	SAY-3	AMC459718	Mohave	2020021222
4	SAY-4	AMC459719	Mohave	2020021223
5	SAY-5	AMC459720	Mohave	2020021224
6	SAY-6	AMC459721	Mohave	2020021225
7	SAY-7	AMC459722	Mohave	2020021226
8	SAY-8	AMC459723	Mohave	2020021227
9	SAY-9	AMC459724	Mohave	2020021228
10	SAY-10	AMC459725	Mohave	2020021229
11	SAY-11	AMC459726	Mohave	2020021230
12	SAY-12	AMC459727	Mohave	2020021231
13	SAY-13	AMC459728	Mohave	2020021232
14	SAY-14	AMC459729	Mohave	2020021233
15	SAY-15	AMC459730	Mohave	2020021234
16	SAY-16	AMC459731	Mohave	2020021235
17	SAY-17	AMC459732	Mohave	2020021236
18	SAY-18	AMC459733	Mohave	2020021237
19	SAY-19	AMC459734	Mohave	2020021238
20	SAY-20	AMC459735	Mohave	2020021239
21	SAY-21	AMC459736	Mohave	2020021240
22	SAY-22	AMC459737	Mohave	2020021241
23	SAY-23	AMC459738	Mohave	2020021242
24	SAY-24	AMC459739	Mohave	2020021243
25	SAY-25	AMC459740	Mohave	2020021244
26	SAY-26	AMC459741	Mohave	2020021245
27	SAY-27	AMC459742	Mohave	2020021246
28	SAY-28	AMC459743	Mohave	2020021247
29	SAY-29	AMC459744	Mohave	2020021248
30	SAY-30	AMC459745	Mohave	2020021249
31	SAY-31	AMC459746	Mohave	2020021250
32	SAY-32	AMC459747	Mohave	2020021251
33	SAY-33	AMC459748	Mohave	2020021252
34	SAY-34	AMC459749	Mohave	2020021253
35	SAY-35	AMC459750	Mohave	2020021254
36	SAY-36	AMC459751	Mohave	2020021255
37	SAY-37	AMC459752	Mohave	2020021256
38	SAY-38	AMC459753	Mohave	2020021257
39	SAY-39	AMC459754	Mohave	2020021258
40	SAY-40	AMC459755	Mohave	2020021259
41	SAY-41	AMC459756	Mohave	2020021260
42	SAY-42	AMC459757	Mohave	2020021261
43	SAY-43	AMC459758	Mohave	2020021262

RECEIVED
 BLM AZ STATE OFFICE
 2020 AUG 28 A 8:03
 PHOENIX, ARIZONA

EXHIBIT A
BELL RESOURCES (NEVADA) CORPORATION

Notice of Intent to Hold the following unpatented mining claims for 2020-2021

No.	Claim	BLMAMC	County	Fee Number
44	SAY-44	AMC459759	Mohave	2020021263
45	SAY-45	AMC459760	Mohave	2020021264
46	SAY-46	AMC459761	Mohave	2020021265
47	SAY-47	AMC459762	Mohave	2020021266
48	SAY-48	AMC459763	Mohave	2020021267
49	SAY-49	AMC459764	Mohave	2020021268
50	SAY-50	AMC459765	Mohave	2020021269
51	SAY-51	AMC459766	Mohave	2020021270
52	SAY-52	AMC459767	Mohave	2020021271
53	SAY-53	AMC459768	Mohave	2020021272
54	SAY-54	AMC459769	Mohave	2020021273
55	SAY-55	AMC459770	Mohave	2020021274
56	SAY-56	AMC459771	Mohave	2020021275
57	SAY-57	AMC459772	Mohave	2020021276
58	SAY-58	AMC459773	Mohave	2020021277
59	SAY-59	AMC459774	Mohave	2020021278
60	SAY-60	AMC459775	Mohave	2020021279
61	SAY-61	AMC459776	Mohave	2020021280
62	SAY-62	AMC459777	Mohave	2020021281
63	SAY-63	AMC459778	Mohave	2020021282
64	SAY-64	AMC459779	Mohave	2020021283
65	SAY-65	AMC459780	Mohave	2020021284
66	SAY-66	AMC459781	Mohave	2020021285
67	SAY-67	AMC459782	Mohave	2020021286
68	SAY-68	AMC459783	Mohave	2020021287
69	SAY-69	AMC459784	Mohave	2020021288
70	SAY-70	AMC459785	Mohave	2020021289
71	SAY-71	AMC459786	Mohave	2020021290
72	SAY-72	AMC459787	Mohave	2020021291
73	SAY-73	AMC459788	Mohave	2020021292
74	SAY-74	AMC459789	Mohave	2020021293
75	SAY-75	AMC459790	Mohave	2020021294
76	SAY-76	AMC459791	Mohave	2020021295
77	SAY-77	AMC459792	Mohave	2020021296
78	SAY-78	AMC459793	Mohave	2020021297
79	SAY-79	AMC459794	Mohave	2020021298
80	SAY-80	AMC459795	Mohave	2020021299
81	SAY-81	AMC459796	Mohave	2020021300
82	SAY-82	AMC459797	Mohave	2020021301
83	SAY-83	AMC459798	Mohave	2020021302
84	SAY-84	AMC459799	Mohave	2020021303
85	SAY-85	AMC459800	Mohave	2020021304
86	SAY-86	AMC459801	Mohave	2020021305

PHOENIX, ARIZONA

2020 AUG 28 A 8:03

RECEIVED
 BLM AZ STATE OFFICE

EXHIBIT A
BELL RESOURCES (NEVADA) CORPORATION

Notice of Intent to Hold the following unpatented mining claims for 2020-2021

No.	Claim	BLMAMC	County	Fee Number
87	SAY-87	AMC459802	Mohave	2020021306
88	SAY-88	AMC459803	Mohave	2020021307
89	SAY-89	AMC459804	Mohave	2020021308
90	SAY-90	AMC459805	Mohave	2020021309
91	SAY-91	AMC459806	Mohave	2020021310
92	SAY-92	AMC459807	Mohave	2020021311
93	SAY-93	AMC459808	Mohave	2020021312
94	SAY-94	AMC459809	Mohave	2020021313
95	SAY-95	AMC459810	Mohave	2020021314
96	SAY-96	AMC459811	Mohave	2020021315
97	SAY-97	AMC459812	Mohave	2020021316
98	SAY-98	not yet assigned	Mohave	2020040180
99	SAY-99	not yet assigned	Mohave	2020040181
100	SAY-100	not yet assigned	Mohave	2020040182
101	SAY-101	not yet assigned	Mohave	2020040183
102	SAY-102	not yet assigned	Mohave	2020040184
103	SAY-103	not yet assigned	Mohave	2020040185
104	SAY-104	not yet assigned	Mohave	2020040186
105	SAY-105	not yet assigned	Mohave	2020040187
106	SAY-106	not yet assigned	Mohave	2020040188
107	SAY-107	not yet assigned	Mohave	2020040189
108	SAY-108	not yet assigned	Mohave	2020040190
109	SAY-109	not yet assigned	Mohave	2020040191
110	SAY-110	not yet assigned	Mohave	2020040192
111	SAY-111	not yet assigned	Mohave	2020040193
112	SAY-112	not yet assigned	Mohave	2020040194
113	SAY-113	not yet assigned	Mohave	2020040195
114	SAY-114	not yet assigned	Mohave	2020040196
115	SAY-115	not yet assigned	Mohave	2020040197
116	SAY-116	not yet assigned	Mohave	2020040198
117	SAY-117	not yet assigned	Mohave	2020040199
118	SAY-118	not yet assigned	Mohave	2020040200
119	SAY-119	not yet assigned	Mohave	2020040201
120	SAY-120	not yet assigned	Mohave	2020040202
121	SAY-121	not yet assigned	Mohave	2020040203
122	SAY-122	not yet assigned	Mohave	2020040204
123	SAY-123	not yet assigned	Mohave	2020040205
124	SAY-124	not yet assigned	Mohave	2020040206
125	SAY-125	not yet assigned	Mohave	2020040207
126	SAY-126	not yet assigned	Mohave	2020040208
127	SAY-127	not yet assigned	Mohave	2020040209
128	SAY-128	not yet assigned	Mohave	2020040210

RECEIVED
BLM AZ STATE OFFICE
2020 AUG 28 A 8:03
PHOENIX, ARIZONA

United States Department of the Interior
Bureau of Land Management
 DIV OF LANDS, MINRLS & ENERGY
 ONE N CENTRAL AVE
 PHOENIX, AZ 85004 -4427
 Phone: 602-417-9200

Receipt	
No:	4793405

Transaction #: 4920551	
Date of Transaction: 08/31/2020	
CUSTOMER:	
BELL RESOURCES (NEVADA) CORP 4750 N BONANZA AVE TUCSON, AZ 85749-8293 US	

LINE #	QTY	DESCRIPTION	REMARKS	UNIT PRICE	TOTAL
1	31.00	LOCATABLE MINERALS / MINING CLAIMS- NEW, UNADJUD, ONE OR MORE AUTH NOS / NEW MINING CLAIM PROCESSING FEE CASES: AMC460863/\$20.00, AMC460864/\$20.00, AMC460865/\$20.00, AMC460866/\$20.00, AMC460867/\$20.00, AMC460868/\$20.00, AMC460869/\$20.00, AMC460870/\$20.00, AMC460871/\$20.00, AMC460872/\$20.00, AMC460873/\$20.00, AMC460874/\$20.00, AMC460875/\$20.00, AMC460876/\$20.00, AMC460877/\$20.00, AMC460878/\$20.00, AMC460879/\$20.00, AMC460880/\$20.00, AMC460881/\$20.00, AMC460882/\$20.00, AMC460883/\$20.00, AMC460884/\$20.00, AMC460885/\$20.00, AMC460886/\$20.00, AMC460887/\$20.00, AMC460888/\$20.00, AMC460889/\$20.00, AMC460890/\$20.00, AMC460891/\$20.00, AMC460892/\$20.00, AMC460893/\$20.00		- n/a -	620.00
2	31.00	LOCATABLE MINERALS / MINING CLAIMS- NEW, UNADJUD, ONE OR MORE AUTH NOS / NEW MINING CLAIMS LOCATION FEE CASES: AMC460863/\$40.00, AMC460864/\$40.00, AMC460865/\$40.00, AMC460866/\$40.00, AMC460867/\$40.00, AMC460868/\$40.00, AMC460869/\$40.00, AMC460870/\$40.00, AMC460871/\$40.00, AMC460872/\$40.00, AMC460873/\$40.00, AMC460874/\$40.00, AMC460875/\$40.00, AMC460876/\$40.00,		- n/a -	1240.00

		AMC460877/\$40.00, AMC460878/\$40.00, AMC460879/\$40.00, AMC460880/\$40.00, AMC460881/\$40.00, AMC460882/\$40.00, AMC460883/\$40.00, AMC460884/\$40.00, AMC460885/\$40.00, AMC460886/\$40.00, AMC460887/\$40.00, AMC460888/\$40.00, AMC460889/\$40.00, AMC460890/\$40.00, AMC460891/\$40.00, AMC460892/\$40.00, AMC460893/\$40.00			
3	31.00	LOCATABLE MINERALS / MINING CLAIMS-NEW,UNADJUD, ONE OR MORE AUTH NOS / NEW MINING CLAIMS MAINTENANCE FEE CASES: AMC460863/\$165.00, AMC460864/\$165.00, AMC460865/\$165.00, AMC460866/\$165.00, AMC460867/\$165.00, AMC460868/\$165.00, AMC460869/\$165.00, AMC460870/\$165.00, AMC460871/\$165.00, AMC460872/\$165.00, AMC460873/\$165.00, AMC460874/\$165.00, AMC460875/\$165.00, AMC460876/\$165.00, AMC460877/\$165.00, AMC460878/\$165.00, AMC460879/\$165.00, AMC460880/\$165.00, AMC460881/\$165.00, AMC460882/\$165.00, AMC460883/\$165.00, AMC460884/\$165.00, AMC460885/\$165.00, AMC460886/\$165.00, AMC460887/\$165.00, AMC460888/\$165.00, AMC460889/\$165.00, AMC460890/\$165.00, AMC460891/\$165.00, AMC460892/\$165.00, AMC460893/\$165.00		- n/a -	5115.00
4	1.00	LOCATABLE MINERALS / MINING CLAIMS-NOT NEW-UNADJUD,ONE AUTH NO. ONLY / MINING CLAIM MONEY RECEIVED CASES: AMC459716/\$21120.00	MAINT 2021	- n/a -	21120.00
TOTAL:					\$28,095.00

PAYMENT INFORMATION				
NOTE: Items will appear on credit card statement as "Bureau of Land Mgmt CO".				
1	AMOUNT:	403.00	POSTMARKED:	N/A
	TYPE:	CREDIT CARD	RECEIVED:	08/31/2020
	NAME:	BELL RESOURCES (NEVADA) CORP 4750 N BONANZA AVE TUCSON AZ 85749-8293 US		
	CARD NO:	XXXXXXXXXXXX8757	AUTH CODE:	009947
	NAME ON CARD:	TIMOTHY M MARSH		
	SIGNATURE:	BY MAIL		

2	AMOUNT:	27692.00	POSTMARKED:	N/A
	TYPE:	CHECK	RECEIVED:	08/28/2020
	CHECK NO:	1549		
	NAME:	BELL RESOURCES (NEVADA) CORP 4750 N BONANZA AVE TUCSON AZ 85749-8293 US		

REMARKS

This receipt was generated by the automated BLM Collections and Billing System and is a paper representation of a portion of the official electronic record contained therein.

MISCELLANEOUS

**LOCATION NOTICES
AMENDMENTS
STATUS SHEET
GEO REPORT/MTP**

MINING CLAIM STATUS REPORT - Assessment Year 2020

Data Entered: 200 9/3/2020

MTP Checked By: ZDU

GEO Checked By: ZDU

LEAD SERIAL NUMBER: AMC 460863 thru AMC 460893

NUMBER OF CLAIMS & TYPE:

CHARGES:

31 LODE
 _____ PLACER
 _____ ASSOCIATION PLACER
 _____ MILL SITE
 _____ TUNNEL SITE

Processing Fee @ \$20 = \$ 620
 Location Fee @ \$40 = \$ 1,240
 Maintenance Fee @ \$165 = \$ 5,115
 Add'l Maint Fee for Assoc Placer = \$ _____
SUBTOTAL \$ _____

TOTAL ACREAGE: _____ Per Claim
 (Placer Only)

Other Fees \$ _____
128 maint 2021 Other Fees \$ 21,120
TOTAL \$ 6975
28,095

NUMBER OF LOCATORS: _____

DOCUMENTS RECEIVED VIA: Over-the-Counter [] Mail [] **TIMELY FILED:** Yes [] No []

LEGAL DESCRIPTION: T 17N R 12W SEC 6,7
 T _____ R _____ SEC _____
 T _____ R _____ SEC _____
 T _____ R _____ SEC _____
 T _____ R _____ SEC _____

BLM [] FOREST SERVICE [] _____ SUBJ TO PL 359: Yes [] No []
 WILDERNESS AREA [] _____

SPLIT ESTATE: N/A [] SX [] PX [] OTHER [] _____
 SRHA [] Was proper Notice filed if located on SHRA Land? Yes [] No []

RECONVEYED MINERALS ON BLM LAND REQUIRE OPENING ORDER FROM 1944 TO 1993:

Open to Entry On _____ N/A []

COMMENTS/STATUS: VOID [] PARTIALLY VOID [] PVT MINERALS [] WITHDRAWN LANDS []
 OTHER [] _____

[] Claimant acknowledges that portions of the following claim(s) site(s) may be void or voidable.

Printed Name of Claimant _____ Signature of Claimant _____

*****FINAL ADJUDICATION*****

DATE _____ INITIALS _____

#4793405

AMC 460863

OFFICIAL RECORDS
OF MOHAVE COUNTY
KRISTI BLAIR,
COUNTY RECORDER



07/21/2020 01:08 PM Fee: \$30.00
PAGE: 1 of 1

Recording requested by:
Bell Resources (Nevada) Corporation

When recorded return to:
Tim Marsh
4750 N. Bonanza Avenue
Tucson, AZ 85749

LOCATION NOTICE FOR LODE MINING CLAIM

NOTICE IS HEREBY GIVEN that the SAY 98 lode mining claim has been located by Bell Resources (Nevada) Corporation, 4750 North Bonanza Avenue, Tucson, Arizona 85749. The general course of this claim is east-west and it is situated in Mohave County, Arizona. This claim is 1500 feet in length and 600 feet in width. This claim runs from the location monument on which this location notice is posted approximately 10 feet in an easterly direction to the east end line and 1490 feet in a westerly direction to the west end line with 300 feet on each side of the monument of location and centerline of the claim. This claim is marked by six monuments, one at each corner and one at the center of each end line of the claim.

The location monument on which this notice is posted is situated within Section 6, Township 17 North, Range 12 West, Gila and Salt River Meridian, Arizona, and this claim occupies the following Quarter Section(s), Section(s), Township(s), and Range(s):

Quarter Section	Section	Township	Range
<u>NW</u>	<u>6</u>	17 North	12 West
_____	_____	17 North	12 West
_____	_____	17 North	12 West
_____	_____	17 North	12 West

The Northeast corner of this claim is approximately 1500 feet East and 37 feet South of the surveyed Northwest corner of Section 1, Township 17 North, Range 13 West, Gila and Salt River Meridian.

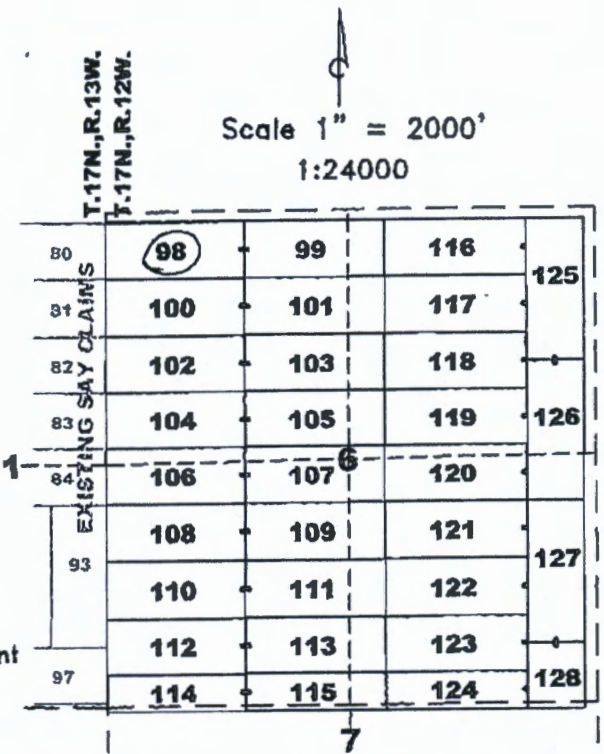
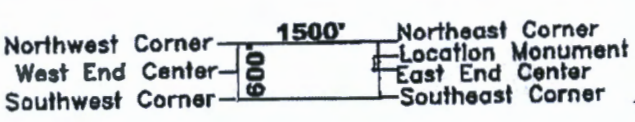
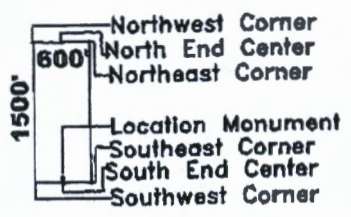
DATED AND POSTED on the ground this
12th day of July, 2020.

Timothy M. Marsh
Timothy M. Marsh, Agent for:

Claim Map for SAY Lode Claim

Bell Resources (Nevada) Corporation
4750 North Bonanza Avenue
Tucson, Arizona 85749

Typical Claims



Location Monuments are 10' from end lines.

SAY 114,115,124 are 1500'x400'
SAY 128 is 700'x600'

The above map depicts the SAY 98 lode mining claim, which is located in Section(s) 6, Township 17 North, Range 12 West, Gila and Salt River Meridian, Mohave County, Arizona. The claim corners, end centers, and location monument are marked by 2 inch by 2 inch by 5 foot wooden posts with aluminum tags. The bearings and distances between claim corners are as depicted on the map.

RECEIVED
BLAIR STATE OFFICE
2020 AUG 28 A 8:03
PHOENIX, ARIZONA

AMC460863

Recording requested by:
Bell Resources (Nevada) Corporation

When recorded return to:
Tim Marsh
4750 N. Bonanza Avenue
Tucson, AZ 85749

FEE# 2020040181

OFFICIAL RECORDS
OF MOHAVE COUNTY
KRISTI BLAIR,
COUNTY RECORDER



07/21/2020 01:08 PM Fee: \$30.00

PAGE: 1 of 1

LOCATION NOTICE FOR LODE MINING CLAIM

NOTICE IS HEREBY GIVEN that the SAY 99 lode mining claim has been located by Bell Resources (Nevada) Corporation, 4750 North Bonanza Avenue, Tucson, Arizona 85749. The general course of this claim is east-west and it is situated in Mohave County, Arizona. This claim is 1500 feet in length and 600 feet in width. This claim runs from the location monument on which this location notice is posted approximately 1490 feet in an easterly direction to the east end line and 10 feet in a westerly direction to the west end line with 300 feet on each side of the monument of location and centerline of the claim. This claim is marked by six monuments, one at each corner and one at the center of each end line of the claim.

The location monument on which this notice is posted is situated within Section 6, Township 17 North, Range 12 West, Gila and Salt River Meridian, Arizona, and this claim occupies the following Quarter Section(s), Section(s), Township(s), and Range(s):

Quarter Section	Section	Township	Range
<u>NW</u>	<u>6</u>	17 North	12 West
<u>NE</u>	<u>6</u>	17 North	12 West
_____	_____	17 North	12 West
_____	_____	17 North	12 West

The Northeast corner of this claim is approximately 3000 feet East and 74 feet South of the surveyed Northwest corner of Section 1, Township 17 North, Range 13 West, Gila and Salt River Meridian.

DATED AND POSTED on the ground this
12th day of July, 2020.

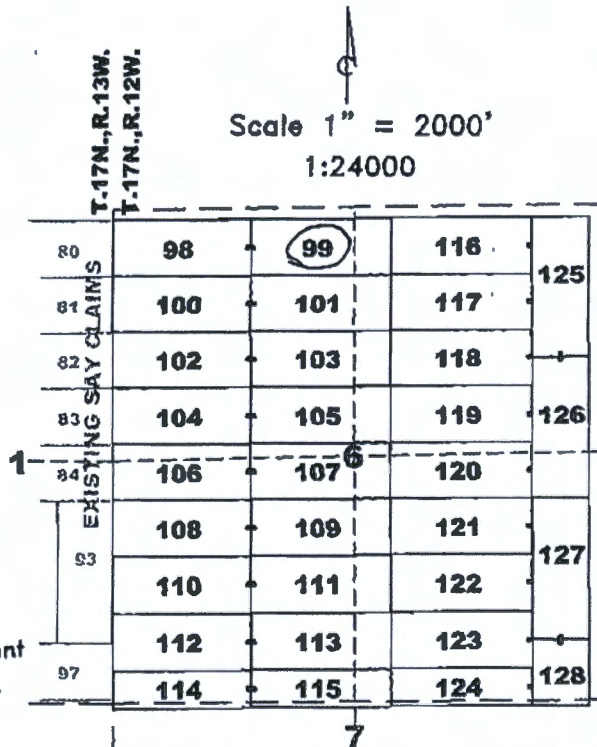
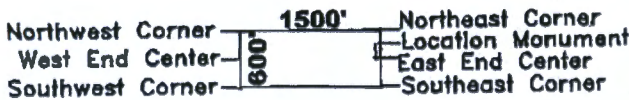
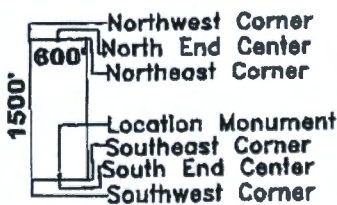
Timothy M. Marsh

Timothy M. Marsh, Agent for:

Claim Map for SAY Lode Claim

Bell Resources (Nevada) Corporation
4750 North Bonanza Avenue
Tucson, Arizona 85749

Typical Claims



Location Monuments are 10' from end lines.

SAY 114,115,124 are 1500'x400'
SAY 128 is 700'x600'

The above map depicts the SAY 99 lode mining claim, which is located in Section(s) 99 Township 17 North, Range 12 West, Gila and Salt River Meridian, Mohave County, Arizona. The claim corners, end centers, and location monument are marked by 2 inch by 2 inch by 5 foot wooden posts with aluminum tags. The bearings and distances between claim corners are as depicted on the map.

AMC460864

RECEIVED
BLAIR STATE OFFICE
JUL 28 A 8:03
MOHAVE COUNTY, ARIZONA

OFFICIAL RECORDS
OF MOHAVE COUNTY
KRISTI BLAIR,
COUNTY RECORDER



07/21/2020 01:08 PM Fee: \$30.00

PAGE: 1 of 1

Recording requested by:
Bell Resources (Nevada) Corporation

When recorded return to:
Tim Marsh
4750 N. Bonanza Avenue
Tucson, AZ 85749

LOCATION NOTICE FOR LODE MINING CLAIM

NOTICE IS HEREBY GIVEN that the SAY 100 lode mining claim has been located by Bell Resources (Nevada) Corporation, 4750 North Bonanza Avenue, Tucson, Arizona 85749. The general course of this claim is east-west and it is situated in Mohave County, Arizona. This claim is 1500 feet in length and 600 feet in width. This claim runs from the location monument on which this location notice is posted approximately 10 feet in an easterly direction to the east end line and 1490 feet in a westerly direction to the west end line with 300 feet on each side of the monument of location and centerline of the claim. This claim is marked by six monuments, one at each corner and one at the center of each end line of the claim.

The location monument on which this notice is posted is situated within Section 6, Township 17 North, Range 12 West, Gila and Salt River Meridian, Arizona, and this claim occupies the following Quarter Section(s), Section(s), Township(s), and Range(s):

Quarter Section	Section	Township	Range
<u>NW</u>	<u>6</u>	17 North	12 West
_____	_____	17 North	12 West
_____	_____	17 North	12 West
_____	_____	17 North	12 West

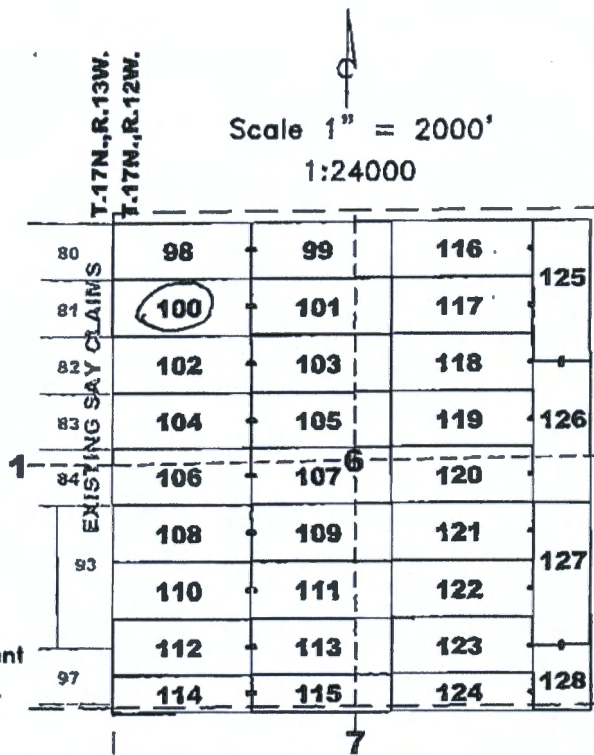
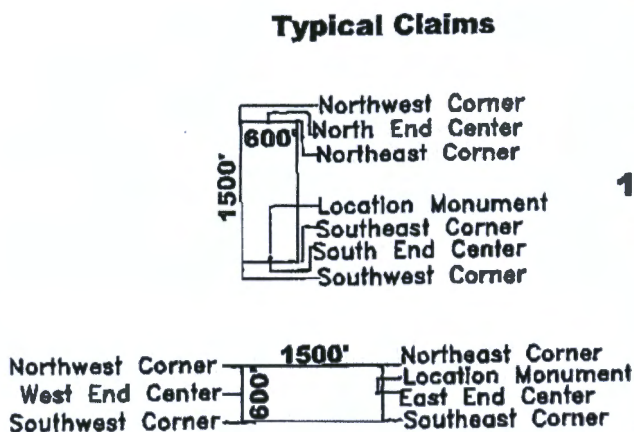
The Northeast corner of this claim is approximately 1485 feet East and 637 feet South of the surveyed Northwest corner of Section 1, Township 17 North, Range 13 West, Gila and Salt River Meridian.

DATED AND POSTED on the ground this
12th day of July, 2020.

Claim Map for SAY Lode Claim

Timothy M. Marsh
Timothy M. Marsh, Agent for:

Bell Resources (Nevada) Corporation
4750 North Bonanza Avenue
Tucson, Arizona 85749



Location Monuments are 10' from end lines.

SAY 114,115,124 are 1500'x400'
SAY 128 is 700'x600'

The above map depicts the SAY 100 lode mining claim, which is located in Section(s) 6 Township 17 North, Range 12 West, Gila and Salt River Meridian, Mohave County, Arizona. The claim corners, end centers, and location monument are marked by 2 inch by 2 inch by 5 foot wooden posts with aluminum tags. The bearings and distances between claim corners are as depicted on the map.

PHOENIX, ARIZONA
2020 JUL 28 A 8:08
RECEIVED
BLM AZ STATE OFFICE

AMC460865



Recording requested by:
Bell Resources (Nevada) Corporation

When recorded return to:
Tim Marsh
4750 N. Bonanza Avenue
Tucson, AZ 85749

LOCATION NOTICE FOR LODE MINING CLAIM

NOTICE IS HEREBY GIVEN that the SAY 101 lode mining claim has been located by Bell Resources (Nevada) Corporation, 4750 North Bonanza Avenue, Tucson, Arizona 85749. The general course of this claim is east-west and it is situated in Mohave County, Arizona. This claim is 1500 feet in length and 600 feet in width. This claim runs from the location monument on which this location notice is posted approximately 1490 feet in an easterly direction to the east end line and 10 feet in a westerly direction to the west end line with 300 feet on each side of the monument of location and centerline of the claim. This claim is marked by six monuments, one at each corner and one at the center of each end line of the claim.

The location monument on which this notice is posted is situated within Section 6, Township 17 North, Range 12 West, Gila and Salt River Meridian, Arizona, and this claim occupies the following Quarter Section(s), Section(s), Township(s), and Range(s):

Quarter Section	Section	Township	Range
<u>NW</u>	<u>6</u>	17 North	12 West
<u>NE</u>	<u>6</u>	17 North	12 West
---	---	17 North	12 West
---	---	17 North	12 West

The Northeast corner of this claim is approximately 2984 feet East and 674 feet South of the surveyed Northwest corner of Section 1, Township 17 North, Range 13 West, Gila and Salt River Meridian.

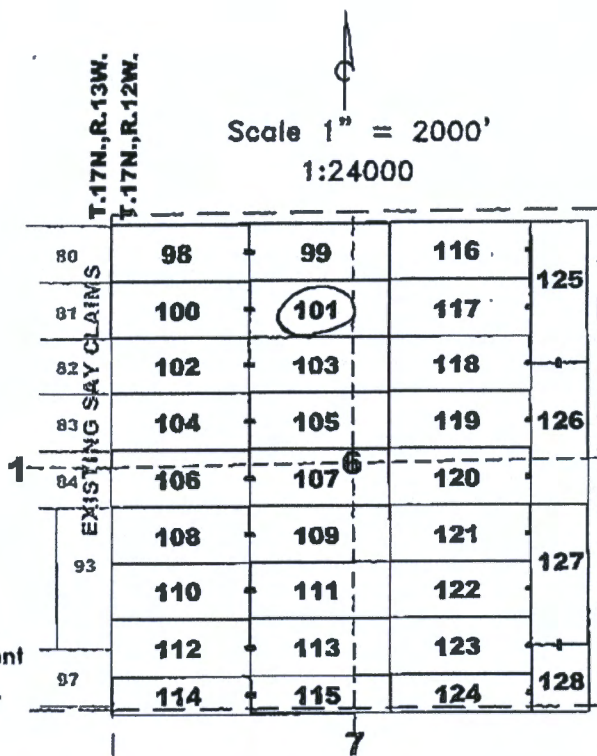
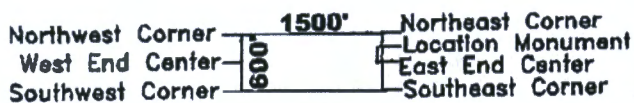
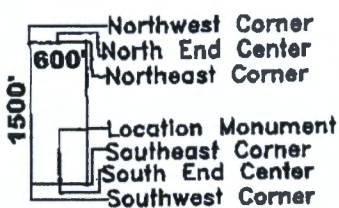
DATED AND POSTED on the ground this 12th day of July, 2020.

Claim Map for SAY Lode Claim

Timothy M. Marsh
Timothy M. Marsh, Agent for:

Bell Resources (Nevada) Corporation
4750 North Bonanza Avenue
Tucson, Arizona 85749

Typical Claims



Location Monuments are 10' from end lines.

SAY 114,115,124 are 1500'x400'
SAY 128 is 700'x600'

AMC460866

The above map depicts the SAY 101 lode mining claim, which is located in Section(s) 6 Township 17 North, Range 12 West, Gila and Salt River Meridian, Mohave County, Arizona. The claim corners, end centers, and location monument are marked by 2 inch by 2 inch by 5 foot wooden posts with aluminum tags. The bearings and distances between claim corners are as depicted on the map.

RECEIVED
MILAN AZ STATE OFFICE
AUG 28 A 8:03
MILAN, ARIZONA

Recording requested by:
Bell Resources (Nevada) Corporation

When recorded return to:
Tim Marsh
4750 N. Bonanza Avenue
Tucson, AZ 85749

FEE# 2020040184

OFFICIAL RECORDS
OF MOHAVE COUNTY
KRISTI BLAIR,
COUNTY RECORDER



07/21/2020 01:08 PM Fee: \$30.00

PAGE: 1 of 1

LOCATION NOTICE FOR LODE MINING CLAIM

NOTICE IS HEREBY GIVEN that the SAY 102 lode mining claim has been located by Bell Resources (Nevada) Corporation, 4750 North Bonanza Avenue, Tucson, Arizona 85749. The general course of this claim is east-west and it is situated in Mohave County, Arizona. This claim is 1500 feet in length and 600 feet in width. This claim runs from the location monument on which this location notice is posted approximately 10 feet in an easterly direction to the east end line and 1490 feet in a westerly direction to the west end line with 300 feet on each side of the monument of location and centerline of the claim. This claim is marked by six monuments, one at each corner and one at the center of each end line of the claim.

The location monument on which this notice is posted is situated within Section 6, Township 17 North, Range 12 West, Gila and Salt River Meridian, Arizona, and this claim occupies the following Quarter Section(s), Section(s), Township(s), and Range(s):

Quarter Section	Section	Township	Range
<u>NW</u>	<u>6</u>	17 North	12 West
_____	_____	17 North	12 West
_____	_____	17 North	12 West
_____	_____	17 North	12 West

The Northeast corner of this claim is approximately 1470 feet East and 1237 feet South of the surveyed Northwest corner of Section 1, Township 17 North, Range 13 West, Gila and Salt River Meridian.

DATED AND POSTED on the ground this
14th day of July, 2020.

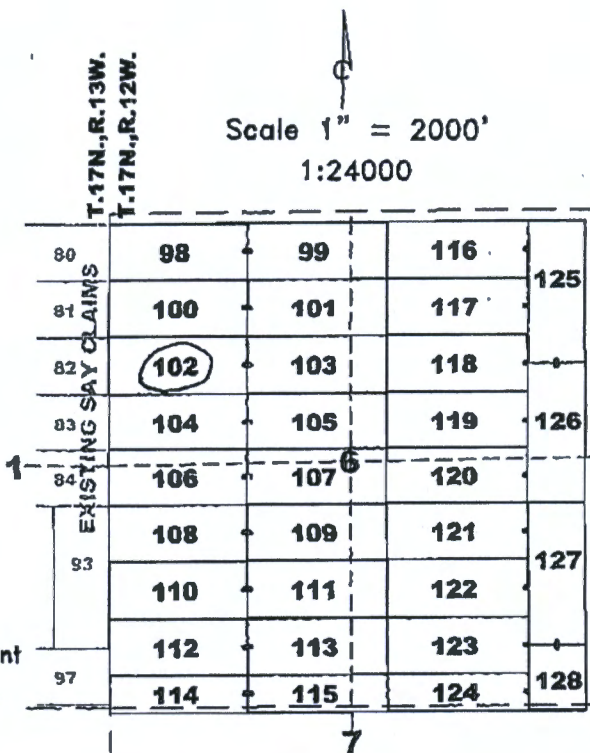
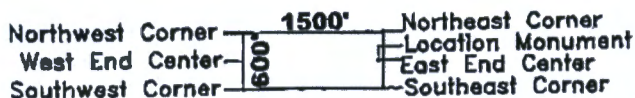
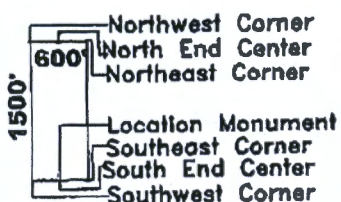
Timothy M. Marsh
Timothy M. Marsh, Agent for:

Claim Map for SAY Lode Claim

Bell Resources (Nevada) Corporation
4750 North Bonanza Avenue
Tucson, Arizona 85749

Scale 1" = 2000'
1:24000

Typical Claims



Location Monuments are 10' from end lines.

SAY 114,115,124 are 1500'x400'
SAY 128 is 700'x600'

AMC460867

The above map depicts the SAY 102 lode mining claim, which is located in Section(s) 6 Township 17 North, Range 12 West, Gila and Salt River Meridian, Mohave County, Arizona. The claim corners, end centers, and location monument are marked by 2 inch by 2 inch by 5 foot wooden posts with aluminum tags. The bearings and distances between claim corners are as depicted on the map.

RECEIVED
AZ STATE OFFICE
AUG 28 A 8:03
PHOENIX, ARIZONA

Recording requested by:
Bell Resources (Nevada) Corporation

When recorded return to:
Tim Marsh
4750 N. Bonanza Avenue
Tucson, AZ 85749

FEE# 2020040185

OFFICIAL RECORDS
OF MOHAVE COUNTY
KRISTI BLAIR,
COUNTY RECORDER



07/21/2020 01:08 PM Fee: \$30.00

PAGE: 1 of 1

LOCATION NOTICE FOR LODE MINING CLAIM

NOTICE IS HEREBY GIVEN that the SAY 103 lode mining claim has been located by Bell Resources (Nevada) Corporation, 4750 North Bonanza Avenue, Tucson, Arizona 85749. The general course of this claim is east-west and it is situated in Mohave County, Arizona. This claim is 1500 feet in length and 600 feet in width. This claim runs from the location monument on which this location notice is posted approximately 1490 feet in an easterly direction to the east end line and 10 feet in a westerly direction to the west end line with 300 feet on each side of the monument of location and centerline of the claim. This claim is marked by six monuments, one at each corner and one at the center of each end line of the claim.

The location monument on which this notice is posted is situated within Section 6, Township 17 North, Range 12 West, Gila and Salt River Meridian, Arizona, and this claim occupies the following Quarter Section(s), Section(s), Township(s), and Range(s):

Quarter Section	Section	Township	Range
<u>NW</u>	<u>6</u>	17 North	12 West
<u>NE</u>	<u>6</u>	17 North	12 West
_____	_____	17 North	12 West
_____	_____	17 North	12 West

The Northeast corner of this claim is approximately 2970 feet East and 1274 feet South of the surveyed Northwest corner of Section 1, Township 17 North, Range 13 West, Gila and Salt River Meridian.

DATED AND POSTED on the ground this
11th day of July 2020.

Claim Map for SAY Lode Claim

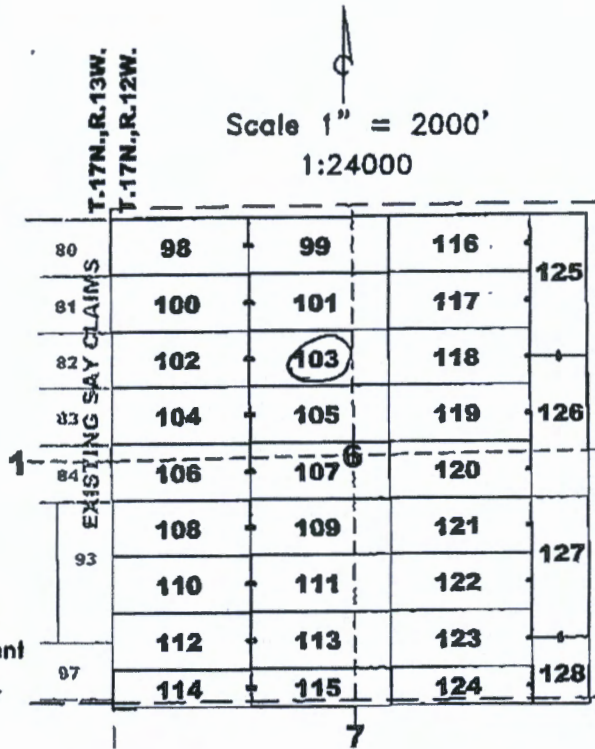
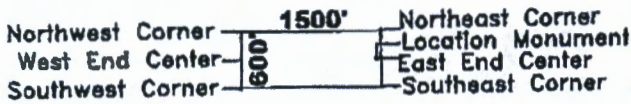
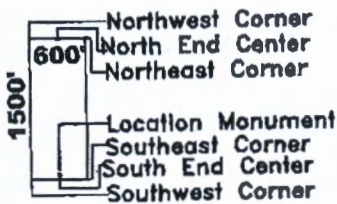
Timothy M. Marsh

Timothy M. Marsh, Agent for:

Bell Resources (Nevada) Corporation
4750 North Bonanza Avenue
Tucson, Arizona 85749

Scale 1" = 2000'
1:24000

Typical Claims



Location Monuments are 10' from end lines.

SAY 114,115,124 are 1500'x400'
SAY 128 is 700'x600'

The above map depicts the SAY 103 lode mining claim, which is located in Section(s) 6 Township 17 North, Range 12 West, Gila and Salt River Meridian, Mohave County, Arizona. The claim corners, end centers, and location monument are marked by 2 inch by 2 inch by 5 foot wooden posts with aluminum tags. The bearings and distances between claim corners are as depicted on the map.

AMC460868

RECEIVED
MAY STATE OFFICE
PHOENIX, ARIZONA
AUG 28 A 8:04

FEE# 2020040186

OFFICIAL RECORDS OF MOHAVE COUNTY KRISTI BLAIR, COUNTY RECORDER



07/21/2020 01:08 PM Fee: \$30.00

PAGE: 1 of 1

Recording requested by: Bell Resources (Nevada) Corporation

When recorded return to: Tim Marsh 4750 N. Bonanza Avenue Tucson, AZ 85749

LOCATION NOTICE FOR LODE MINING CLAIM

NOTICE IS HEREBY GIVEN that the SAY 104 lode mining claim has been located by Bell Resources (Nevada) Corporation, 4750 North Bonanza Avenue, Tucson, Arizona 85749. The general course of this claim is east-west and it is situated in Mohave County, Arizona. This claim is 1500 feet in length and 600 feet in width. This claim runs from the location monument on which this location notice is posted approximately 10 feet in an easterly direction to the east end line and 1490 feet in a westerly direction to the west end line with 300 feet on each side of the monument of location and centerline of the claim. This claim is marked by six monuments, one at each corner and one at the center of each end line of the claim.

The location monument on which this notice is posted is situated within Section 6, Township 17 North, Range 12 West, Gila and Salt River Meridian, Arizona, and this claim occupies the following Quarter Section(s), Section(s), Township(s), and Range(s):

Table with 4 columns: Quarter Section, Section, Township, Range. Values include NW, 6, 17 North, 12 West.

The Northeast corner of this claim is approximately 1455 feet East and 1836 feet South of the surveyed Northwest corner of Section 1, Township 17 North, Range 13 West, Gila and Salt River Meridian.

DATED AND POSTED on the ground this 11th day of July 2020.

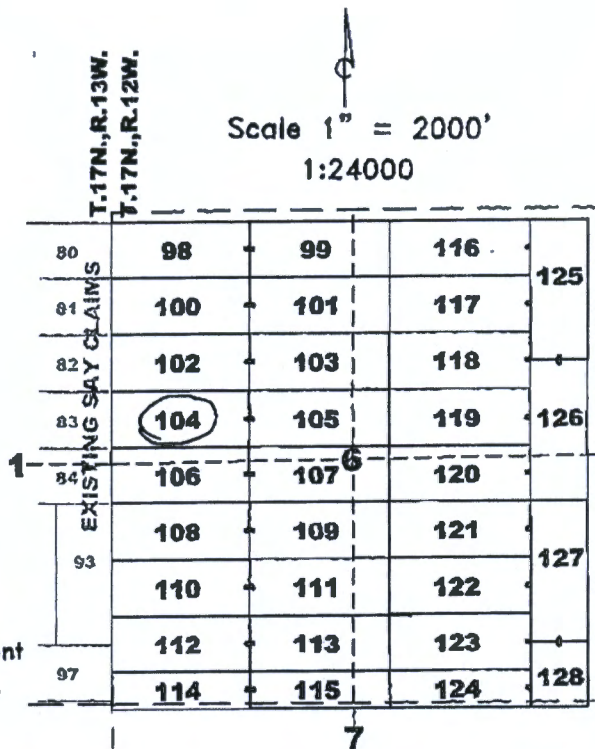
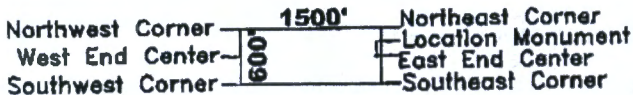
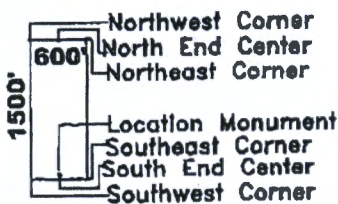
Claim Map for SAY Lode Claim

Signature of Timothy M. Marsh, Agent for:

Bell Resources (Nevada) Corporation 4750 North Bonanza Avenue Tucson, Arizona 85749

Scale 1" = 2000' 1:24000

Typical Claims



Location Monuments are 10' from end lines.

SAY 114,115,124 are 1500'x400' SAY 128 is 700'x600'

The above map depicts the SAY 104 lode mining claim, which is located in Section(s) 6 Township 17 North, Range 12 West, Gila and Salt River Meridian, Mohave County, Arizona. The claim corners, end centers, and location monument are marked by 2 inch by 2 inch by 5 foot wooden posts with aluminum tags. The bearings and distances between claim corners are as depicted on the map.

RECEIVED BLM AZ STATE OFFICE JUN 28 A 8:04 PHOENIX, ARIZONA

AMC460869

OFFICIAL RECORDS
OF MOHAVE COUNTY
KRISTI BLAIR,
COUNTY RECORDER



07/21/2020 01:08 PM Fee: \$30.00
PAGE: 1 of 1

Recording requested by:
Bell Resources (Nevada) Corporation

When recorded return to:
Tim Marsh
4750 N. Bonanza Avenue
Tucson, AZ 85749

LOCATION NOTICE FOR LODE MINING CLAIM

NOTICE IS HEREBY GIVEN that the SAY 105 lode mining claim has been located by Bell Resources (Nevada) Corporation, 4750 North Bonanza Avenue, Tucson, Arizona 85749. The general course of this claim is east-west and it is situated in Mohave County, Arizona. This claim is 1500 feet in length and 600 feet in width. This claim runs from the location monument on which this location notice is posted approximately 1490 feet in an easterly direction to the east end line and 10 feet in a westerly direction to the west end line with 300 feet on each side of the monument of location and centerline of the claim. This claim is marked by six monuments, one at each corner and one at the center of each end line of the claim.

The location monument on which this notice is posted is situated within Section 6, Township 17 North, Range 12 West, Gila and Salt River Meridian, Arizona, and this claim occupies the following Quarter Section(s), Section(s), Township(s), and Range(s):

Quarter Section	Section	Township	Range
<u>NW</u>	<u>6</u>	17 North	12 West
<u>NE</u>	<u>6</u>	17 North	12 West
---	---	17 North	12 West
---	---	17 North	12 West

The Northeast corner of this claim is approximately 2955 feet East and 1873 feet South of the surveyed Northwest corner of Section 1, Township 17 North, Range 13 West, Gila and Salt River Meridian.

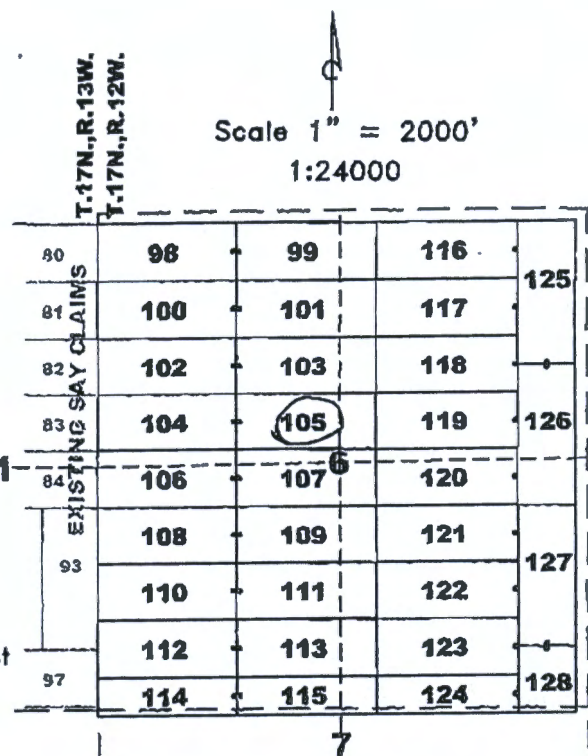
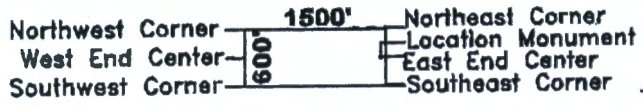
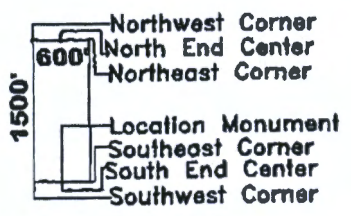
DATED AND POSTED on the ground this 11th day of July, 2020.

Claim Map for SAY Lode Claim

Timothy M. Marsh
Timothy M. Marsh, Agent for:

Bell Resources (Nevada) Corporation
4750 North Bonanza Avenue
Tucson, Arizona 85749

Typical Claims



Location Monuments are 10' from end lines.

SAY 114,115,124 are 1500'x400'
SAY 128 is 700'x600'

The above map depicts the SAY 105 lode mining claim, which is located in Section(s) 105, Township 17 North, Range 12 West, Gila and Salt River Meridian, Mohave County, Arizona. The claim corners, end centers, and location monument are marked by 2 inch by 2 inch by 5 foot wooden posts with aluminum tags. The bearings and distances between claim corners are as depicted on the map.

RECEIVED
STATE OFFICE
2020 AUG 28 A 8:04
PHOENIX, ARIZONA

AMC460870



Recording requested by:
Bell Resources (Nevada) Corporation

When recorded return to:
Tim Marsh
4750 N. Bonanza Avenue
Tucson, AZ 85749

LOCATION NOTICE FOR LODE MINING CLAIM

NOTICE IS HEREBY GIVEN that the SAY 106 lode mining claim has been located by Bell Resources (Nevada) Corporation, 4750 North Bonanza Avenue, Tucson, Arizona 85749. The general course of this claim is east-west and it is situated in Mohave County, Arizona. This claim is 1500 feet in length and 600 feet in width. This claim runs from the location monument on which this location notice is posted approximately 10 feet in an easterly direction to the east end line and 1490 feet in a westerly direction to the west end line with 300 feet on each side of the monument of location and centerline of the claim. This claim is marked by six monuments, one at each corner and one at the center of each end line of the claim.

The location monument on which this notice is posted is situated within Section 6, Township 17 North, Range 12 West, Gila and Salt River Meridian, Arizona, and this claim occupies the following Quarter Section(s), Section(s), Township(s), and Range(s):

Quarter Section	Section	Township	Range
<u>NW</u>	<u>6</u>	17 North	12 West
<u>SW</u>	<u>6</u>	17 North	12 West
---	---	17 North	12 West
---	---	17 North	12 West

The Northeast corner of this claim is approximately 1440 feet East and 2436 feet South of the surveyed Northwest corner of Section 1, Township 17 North, Range 13 West, Gila and Salt River Meridian.

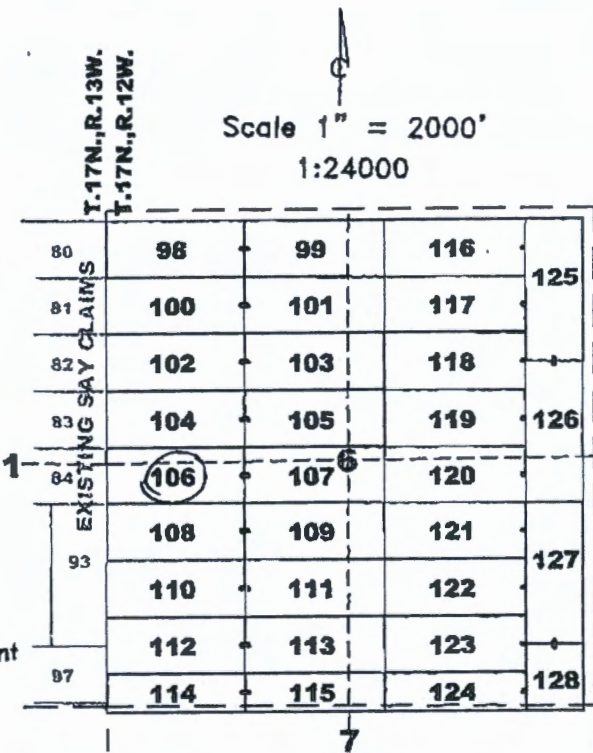
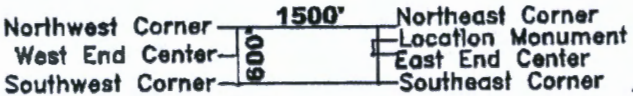
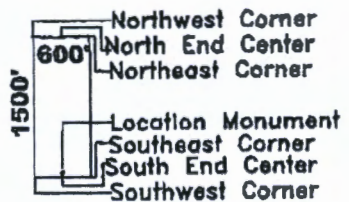
DATED AND POSTED on the ground this
13th day of July, 2020.

[Signature]
Timothy M. Marsh, Agent for:

Claim Map for SAY Lode Claim

Bell Resources (Nevada) Corporation
4750 North Bonanza Avenue
Tucson, Arizona 85749

Typical Claims



Location Monuments are 10' from end lines.

SAY 114,115,124 are 1500'x400'
SAY 128 is 700'x600'

The above map depicts the SAY 106 lode mining claim, which is located in Section(s) 6 Township 17 North, Range 12 West, Gila and Salt River Meridian, Mohave County, Arizona. The claim corners, end centers, and location monument are marked by 2 inch by 2 inch by 5 foot wooden posts with aluminum tags. The bearings and distances between claim corners are as depicted on the map.

RECEIVED
DIA AZ STATE OFFICE
JUN 28 A 8:04
MOHAVE COUNTY, ARIZONA

AMC460871

Recording requested by:
Bell Resources (Nevada) Corporation

When recorded return to:
Tim Marsh
4750 N. Bonanza Avenue
Tucson, AZ 85749

FEE# 2020040189

OFFICIAL RECORDS
OF MOHAVE COUNTY
KRISTI BLAIR,
COUNTY RECORDER



07/21/2020 01:08 PM Fee: \$30.00

PAGE: 1 of 1

LOCATION NOTICE FOR LODE MINING CLAIM

NOTICE IS HEREBY GIVEN that the SAY 107 lode mining claim has been located by Bell Resources (Nevada) Corporation, 4750 North Bonanza Avenue, Tucson, Arizona 85749. The general course of this claim is east-west and it is situated in Mohave County, Arizona. This claim is 1500 feet in length and 600 feet in width. This claim runs from the location monument on which this location notice is posted approximately 1490 feet in an easterly direction to the east end line and 10 feet in a westerly direction to the west end line with 300 feet on each side of the monument of location and centerline of the claim. This claim is marked by six monuments, one at each corner and one at the center of each end line of the claim.

The location monument on which this notice is posted is situated within Section 6, Township 17 North, Range 12 West, Gila and Salt River Meridian, Arizona, and this claim occupies the following Quarter Section(s), Section(s), Township(s), and Range(s):

Quarter Section	Section	Township	Range
NW	6	17 North	12 West
SW	6	17 North	12 West
NE	6	17 North	12 West
SE	6	17 North	12 West

The Northeast corner of this claim is approximately 2940 feet East and 2473 feet South of the surveyed Northwest corner of Section 1, Township 17 North, Range 13 West, Gila and Salt River Meridian.

DATED AND POSTED on the ground this
13th day of July 2020.

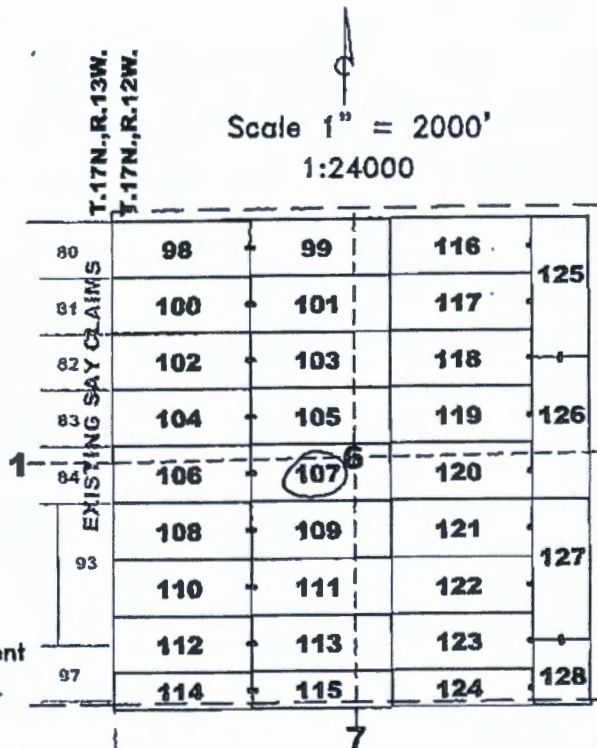
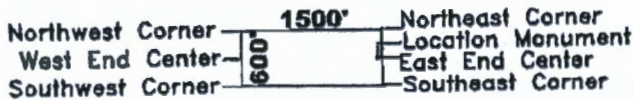
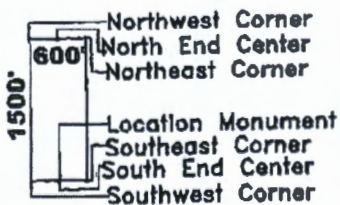
Claim Map for SAY Lode Claim

[Signature]
Timothy M. Marsh, Agent for:

Bell Resources (Nevada) Corporation
4750 North Bonanza Avenue
Tucson, Arizona 85749

Scale 1" = 2000'
1:24000

Typical Claims



Location Monuments are 10' from end lines.

SAY 114,115,124 are 1500'x400'
SAY 128 is 700'x600'

The above map depicts the SAY 107 lode mining claim, which is located in Section(s) 6 Township 17 North, Range 12 West, Gila and Salt River Meridian, Mohave County, Arizona. The claim corners, end centers, and location monument are marked by 2 inch by 2 inch by 5 foot wooden posts with aluminum tags. The bearings and distances between claim corners are as depicted on the map.

RECEIVED
 BLM AZ STATE OFFICE
 AUG 28 A 8:04
 PHOENIX, ARIZONA

AMC460872

OFFICIAL RECORDS
OF MOHAVE COUNTY
KRISTI BLAIR,
COUNTY RECORDER



07/21/2020 01:08 PM Fee: \$30.00

PAGE: 1 of 1

Recording requested by:
Bell Resources (Nevada) Corporation

When recorded return to:
Tim Marsh
4750 N. Bonanza Avenue
Tucson, AZ 85749

LOCATION NOTICE FOR LODE MINING CLAIM

NOTICE IS HEREBY GIVEN that the SAY 108 lode mining claim has been located by Bell Resources (Nevada) Corporation, 4750 North Bonanza Avenue, Tucson, Arizona 85749. The general course of this claim is east-west and it is situated in Mohave County, Arizona. This claim is 1500 feet in length and 600 feet in width. This claim runs from the location monument on which this location notice is posted approximately 10 feet in an easterly direction to the east end line and 1490 feet in a westerly direction to the west end line with 300 feet on each side of the monument of location and centerline of the claim. This claim is marked by six monuments, one at each corner and one at the center of each end line of the claim.

The location monument on which this notice is posted is situated within Section 6, Township 17 North, Range 12 West, Gila and Salt River Meridian, Arizona, and this claim occupies the following Quarter Section(s), Section(s), Township(s), and Range(s):

Quarter Section	Section	Township	Range
<u>SW</u>	<u>6</u>	17 North	12 West
_____	_____	17 North	12 West
_____	_____	17 North	12 West
_____	_____	17 North	12 West

The Northeast corner of this claim is approximately 1426 feet East and 3036 feet South of the surveyed Northwest corner of Section 1, Township 17 North, Range 13 West, Gila and Salt River Meridian.

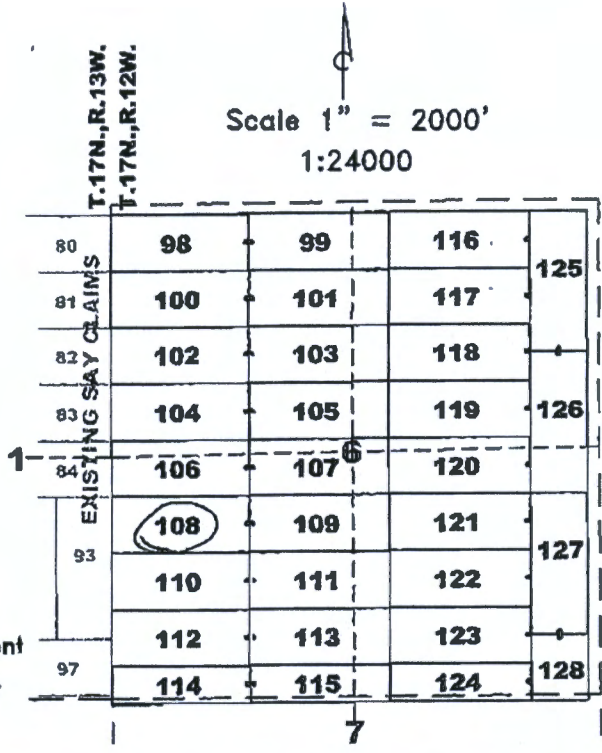
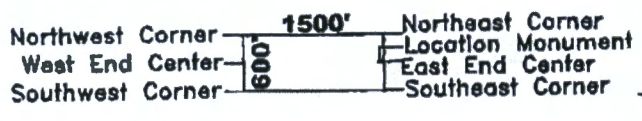
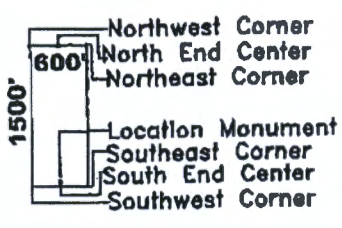
DATED AND POSTED on the ground this
13th day of July, 2020.

[Signature]
Timothy M. Marsh, Agent for:

Claim Map for SAY Lode Claim

Bell Resources (Nevada) Corporation
4750 North Bonanza Avenue
Tucson, Arizona 85749

Typical Claims



Location Monuments are 10' from end lines.

SAY 114,115,124 are 1500'x400'
SAY 128 is 700'x600'

The above map depicts the SAY 108 lode mining claim, which is located in Section(s) 6 Township 17 North, Range 12 West, Gila and Salt River Meridian, Mohave County, Arizona. The claim corners, end centers, and location monument are marked by 2 inch by 2 inch by 5 foot wooden posts with aluminum tags. The bearings and distances between claim corners are as depicted on the map.

RECEIVED
 STATE OFFICE
 JUL 28 A 8:04
 MOHAVE COUNTY, ARIZONA

AMC460873

FEE# 2020040191

OFFICIAL RECORDS
OF MOHAVE COUNTY
KRISTI BLAIR,
COUNTY RECORDER



07/21/2020 01:08 PM Fee: \$30.00

PAGE: 1 of 1

Recording requested by:
Bell Resources (Nevada) Corporation

When recorded return to:
Tim Marsh
4750 N. Bonanza Avenue
Tucson, AZ 85749

LOCATION NOTICE FOR LODE MINING CLAIM

NOTICE IS HEREBY GIVEN that the SAY 109 lode mining claim has been located by Bell Resources (Nevada) Corporation, 4750 North Bonanza Avenue, Tucson, Arizona 85749. The general course of this claim is east-west and it is situated in Mohave County, Arizona. This claim is 1500 feet in length and 600 feet in width. This claim runs from the location monument on which this location notice is posted approximately 1490 feet in an easterly direction to the east end line and 10 feet in a westerly direction to the west end line with 300 feet on each side of the monument of location and centerline of the claim. This claim is marked by six monuments, one at each corner and one at the center of each end line of the claim.

The location monument on which this notice is posted is situated within Section 6, Township 17 North, Range 12 West, Gila and Salt River Meridian, Arizona, and this claim occupies the following Quarter Section(s), Section(s), Township(s), and Range(s):

Quarter Section	Section	Township	Range
SW	6	17 North	12 West
SE	6	17 North	12 West
		17 North	12 West
		17 North	12 West

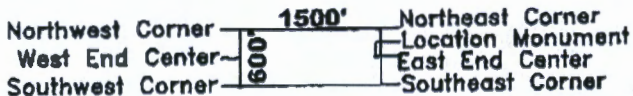
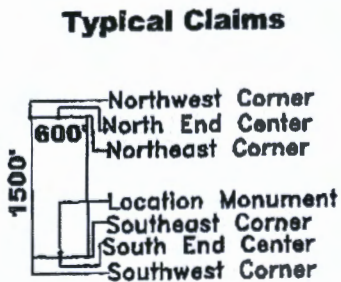
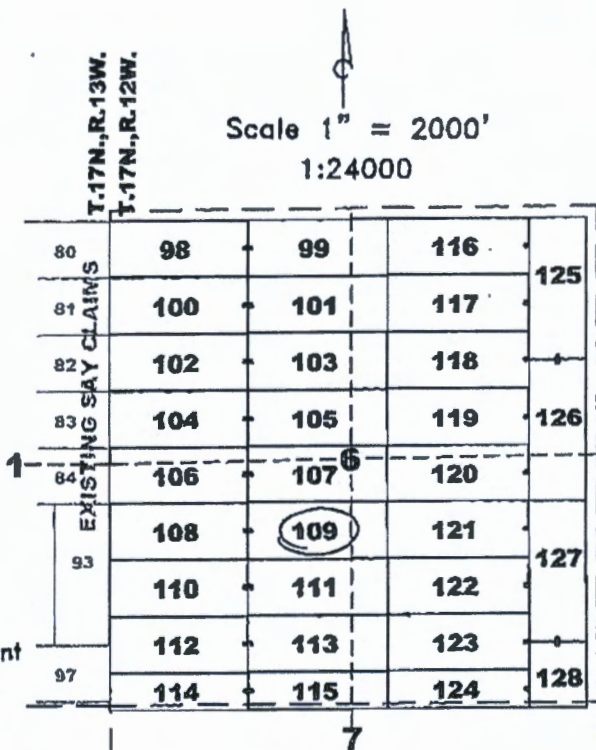
The Northeast corner of this claim is approximately 2925 feet East and 3073 feet South of the surveyed Northwest corner of Section 1, Township 17 North, Range 13 West, Gila and Salt River Meridian.

DATED AND POSTED on the ground this
13th day of July, 2020.

Claim Map for SAY Lode Claim

[Signature]
Timothy M. Marsh, Agent for:

Bell Resources (Nevada) Corporation
4750 North Bonanza Avenue
Tucson, Arizona 85749



Location Monuments are 10' from end lines.

SAY 114,115,124 are 1500'x400'
SAY 128 is 700'x600'

The above map depicts the SAY 109 lode mining claim, which is located in Section(s) 6 Township 17 North, Range 12 West, Gila and Salt River Meridian, Mohave County, Arizona. The claim corners, end centers, and location monument are marked by 2 inch by 2 inch by 5 foot wooden posts with aluminum tags. The bearings and distances between claim corners are as depicted on the map.

RECEIVED
MAY 28 A 8:04
MORNING, ARIZONA
DEPT. OF STATE OFFICE

AMC460874

Recording requested by:
Bell Resources (Nevada) Corporation

When recorded return to:
Tim Marsh
4750 N. Bonanza Avenue
Tucson, AZ 85749

FEE# 2020040192

OFFICIAL RECORDS
OF MOHAVE COUNTY
KRISTI BLAIR,
COUNTY RECORDER



07/21/2020 01:08 PM Fee: \$30.00

PAGE: 1 of 1

LOCATION NOTICE FOR LODE MINING CLAIM

NOTICE IS HEREBY GIVEN that the SAY 110 lode mining claim has been located by Bell Resources (Nevada) Corporation, 4750 North Bonanza Avenue, Tucson, Arizona 85749. The general course of this claim is east-west and it is situated in Mohave County, Arizona. This claim is 1500 feet in length and 600 feet in width. This claim runs from the location monument on which this location notice is posted approximately 10 feet in an easterly direction to the east end line and 1490 feet in a westerly direction to the west end line with 300 feet on each side of the monument of location and centerline of the claim. This claim is marked by six monuments, one at each corner and one at the center of each end line of the claim.

The location monument on which this notice is posted is situated within Section 6, Township 17 North, Range 12 West, Gila and Salt River Meridian, Arizona, and this claim occupies the following Quarter Section(s), Section(s), Township(s), and Range(s):

Quarter Section	Section	Township	Range
<u>SW</u>	<u>6</u>	17 North	12 West
---	---	17 North	12 West
---	---	17 North	12 West
---	---	17 North	12 West

The Northeast corner of this claim is approximately 1411 feet East and 3636 feet South of the surveyed Northwest corner of Section 1, Township 17 North, Range 13 West, Gila and Salt River Meridian.

DATED AND POSTED on the ground this
13th day of July 2020.

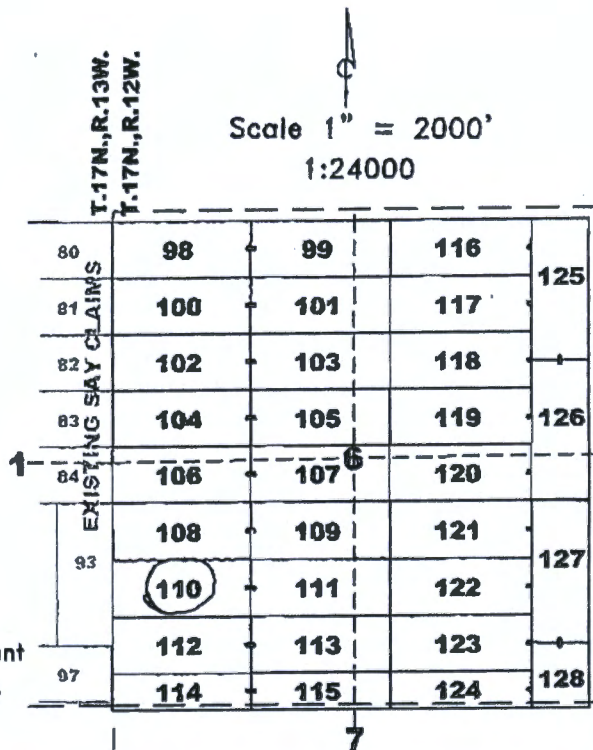
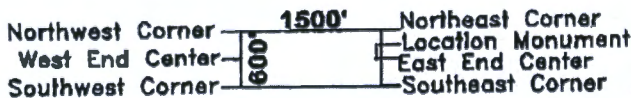
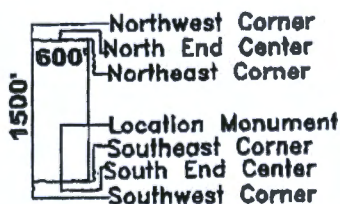
Claim Map for SAY Lode Claim

[Signature]
Timothy M. Marsh, Agent for:

Bell Resources (Nevada) Corporation
4750 North Bonanza Avenue
Tucson, Arizona 85749

Scale 1" = 2000'
1:24000

Typical Claims



Location Monuments are 10' from end lines.

SAY 114,115,124 are 1500'x400'
SAY 128 is 700'x600'

The above map depicts the SAY 110 lode mining claim, which is located in Section(s) 6 Township 17 North, Range 12 West, Gila and Salt River Meridian, Mohave County, Arizona. The claim corners, end centers, and location monument are marked by 2 inch by 2 inch by 5 foot wooden posts with aluminum tags. The bearings and distances between claim corners are as depicted on the map.

RECEIVED
 DEPT. OF STATE OFFICE
 AUG 28 A 8:04
 MOHAVE COUNTY, ARIZONA

AMC460875



Recording requested by:
Bell Resources (Nevada) Corporation

When recorded return to:
Tim Marsh
4750 N. Bonanza Avenue
Tucson, AZ 85749

LOCATION NOTICE FOR LODE MINING CLAIM

NOTICE IS HEREBY GIVEN that the SAY 111 lode mining claim has been located by Bell Resources (Nevada) Corporation, 4750 North Bonanza Avenue, Tucson, Arizona 85749. The general course of this claim is east-west and it is situated in Mohave County, Arizona. This claim is 1500 feet in length and 600 feet in width. This claim runs from the location monument on which this location notice is posted approximately 1490 feet in an easterly direction to the east end line and 10 feet in a westerly direction to the west end line with 300 feet on each side of the monument of location and centerline of the claim. This claim is marked by six monuments, one at each corner and one at the center of each end line of the claim.

The location monument on which this notice is posted is situated within Section 6, Township 17 North, Range 12 West, Gila and Salt River Meridian, Arizona, and this claim occupies the following Quarter Section(s), Section(s), Township(s), and Range(s):

Quarter Section	Section	Township	Range
<u>SW</u>	<u>6</u>	17 North	12 West
<u>SE</u>	<u>6</u>	17 North	12 West
_____	_____	17 North	12 West
_____	_____	17 North	12 West

The Northeast corner of this claim is approximately 2910 feet East and 3673 feet South of the surveyed Northwest corner of Section 1, Township 17 North, Range 13 West, Gila and Salt River Meridian.

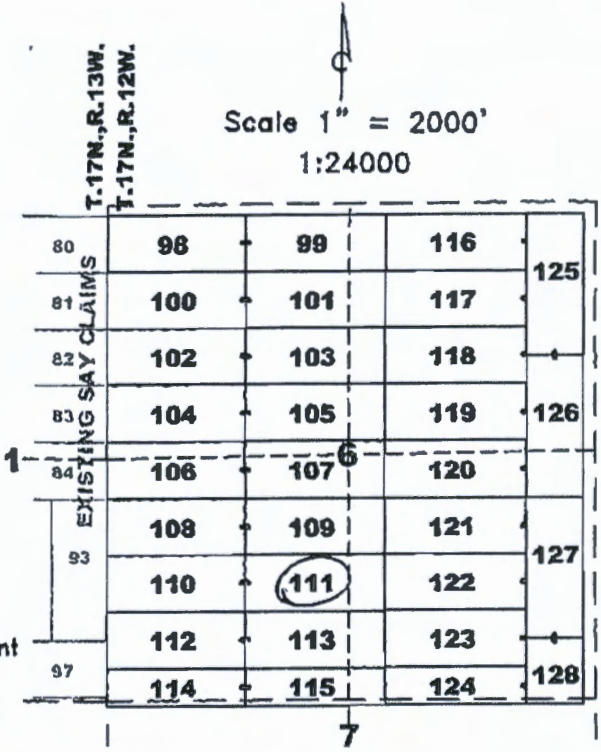
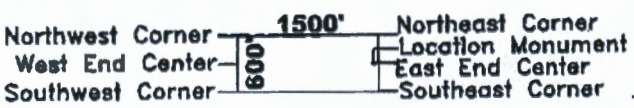
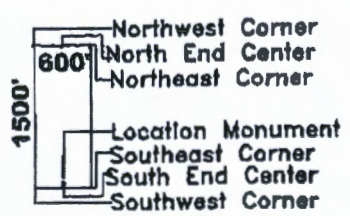
DATED AND POSTED on the ground this
13th day of July, 2020.

[Signature]
Timothy M. Marsh, Agent for:

Claim Map for SAY Lode Claim

Bell Resources (Nevada) Corporation
4750 North Bonanza Avenue
Tucson, Arizona 85749

Typical Claims



Location Monuments are 10' from end lines.

SAY 114,115,124 are 1500'x400'
SAY 128 is 700'x600'

The above map depicts the SAY 111 lode mining claim, which is located in Section(s) 6 Township 17 North, Range 12 West, Gila and Salt River Meridian, Mohave County, Arizona. The claim corners, end centers, and location monument are marked by 2 inch by 2 inch by 5 foot wooden posts with aluminum tags. The bearings and distances between claim corners are as depicted on the map.

RECEIVED
 JUL 28 A 9:04
 MOHAVE COUNTY RECORDER
 TUCSON, ARIZONA

AMC460876

Recording requested by:
Bell Resources (Nevada) Corporation

OFFICIAL RECORDS
OF MOHAVE COUNTY
KRISTI BLAIR,
COUNTY RECORDER



07/21/2020 01:08 PM Fee: \$30.00

When recorded return to:
Tim Marsh
4750 N. Bonanza Avenue
Tucson, AZ 85749

PAGE: 1 of 1

LOCATION NOTICE FOR LODE MINING CLAIM

NOTICE IS HEREBY GIVEN that the SAY 112 lode mining claim has been located by Bell Resources (Nevada) Corporation, 4750 North Bonanza Avenue, Tucson, Arizona 85749. The general course of this claim is east-west and it is situated in Mohave County, Arizona. This claim is 1500 feet in length and 600 feet in width. This claim runs from the location monument on which this location notice is posted approximately 10 feet in an easterly direction to the east end line and 1490 feet in a westerly direction to the west end line with 300 feet on each side of the monument of location and centerline of the claim. This claim is marked by six monuments, one at each corner and one at the center of each end line of the claim.

The location monument on which this notice is posted is situated within Section 6, Township 17 North, Range 12 West, Gila and Salt River Meridian, Arizona, and this claim occupies the following Quarter Section(s), Section(s), Township(s), and Range(s):

Quarter Section	Section	Township	Range
<u>SW</u>	<u>6</u>	17 North	12 West
_____	_____	17 North	12 West
_____	_____	17 North	12 West
_____	_____	17 North	12 West

The Northeast corner of this claim is approximately 1396 feet East and 4236 feet South of the surveyed Northwest corner of Section 1, Township 17 North, Range 13 West, Gila and Salt River Meridian.

DATED AND POSTED on the ground this
14th day of July 2020.

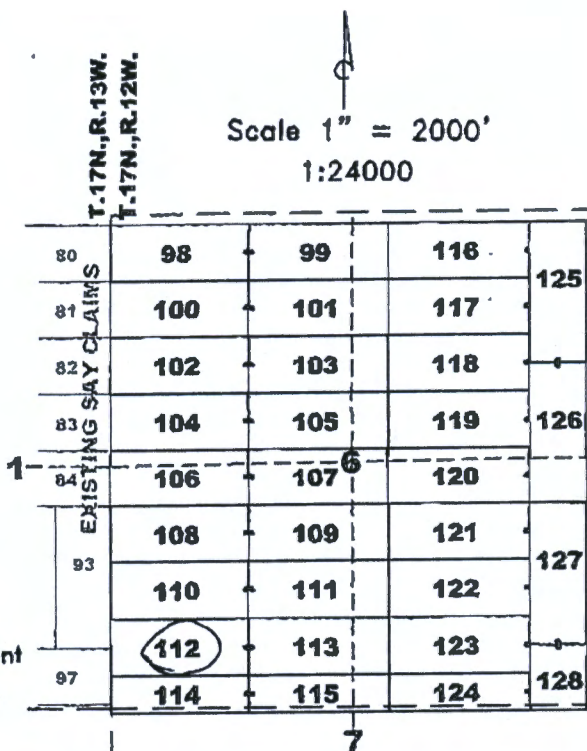
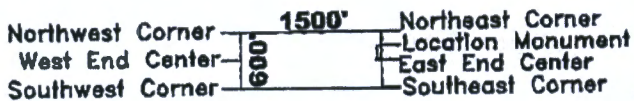
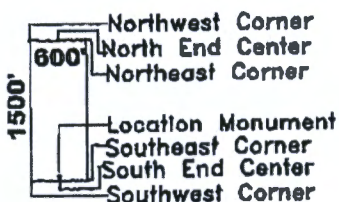
Claim Map for SAY Lode Claim

[Signature]
Timothy M. Marsh, Agent for:

Bell Resources (Nevada) Corporation
4750 North Bonanza Avenue
Tucson, Arizona 85749

Scale 1" = 2000'
1:24000

Typical Claims



Location Monuments are 10' from end lines.

SAY 114,115,124 are 1500'x400'
SAY 128 is 700'x600'

AMC460877

The above map depicts the SAY 112 lode mining claim, which is located in Section(s) 6 Township 17 North, Range 12 West, Gila and Salt River Meridian, Mohave County, Arizona. The claim corners, end centers, and location monument are marked by 2 inch by 2 inch by 5 foot wooden posts with aluminum tags. The bearings and distances between claim corners are as depicted on the map.

RECEIVED
AZ STATE OFFICE
AUG 28 A 8:04
MOHAVE COUNTY, ARIZONA

Recording requested by:
Bell Resources (Nevada) Corporation

When recorded return to:
Tim Marsh
4750 N. Bonanza Avenue
Tucson, AZ 85749

FEE# 2020040195

OFFICIAL RECORDS
OF MOHAVE COUNTY
KRISTI BLAIR,
COUNTY RECORDER



07/21/2020 01:08 PM Fee: \$30.00

PAGE: 1 of 1

LOCATION NOTICE FOR LODE MINING CLAIM

NOTICE IS HEREBY GIVEN that the SAY 113 lode mining claim has been located by Bell Resources (Nevada) Corporation, 4750 North Bonanza Avenue, Tucson, Arizona 85749. The general course of this claim is east-west and it is situated in Mohave County, Arizona. This claim is 1500 feet in length and 600 feet in width. This claim runs from the location monument on which this location notice is posted approximately 1490 feet in an easterly direction to the east end line and 10 feet in a westerly direction to the west end line with 300 feet on each side of the monument of location and centerline of the claim. This claim is marked by six monuments, one at each corner and one at the center of each end line of the claim.

The location monument on which this notice is posted is situated within Section 6, Township 17 North, Range 12 West, Gila and Salt River Meridian, Arizona, and this claim occupies the following Quarter Section(s), Section(s), Township(s), and Range(s):

Quarter Section	Section	Township	Range
<u>SW</u>	<u>6</u>	17 North	12 West
<u>SE</u>	<u>6</u>	17 North	12 West
_____	_____	17 North	12 West
_____	_____	17 North	12 West

The Northeast corner of this claim is approximately 2896 feet East and 4273 feet South of the surveyed Northwest corner of Section 1, Township 17 North, Range 13 West, Gila and Salt River Meridian.

DATED AND POSTED on the ground this
14th day of July, 2020.

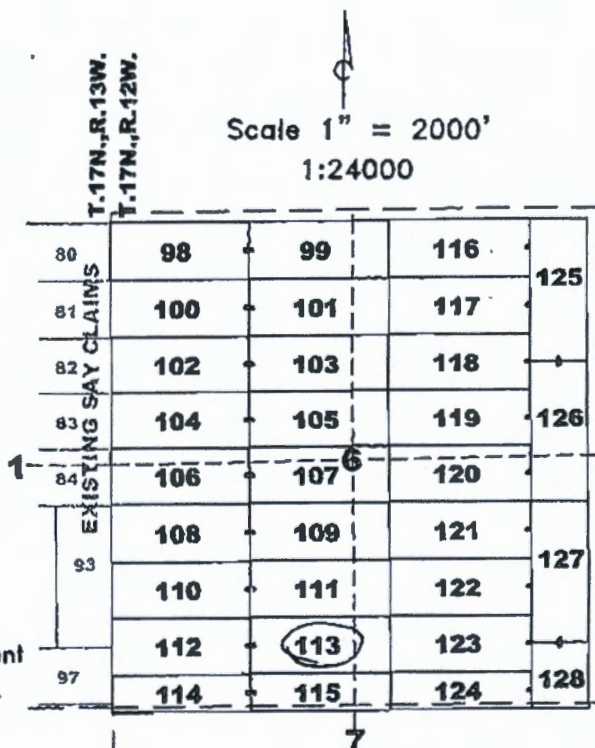
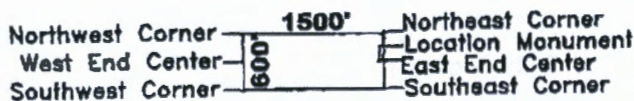
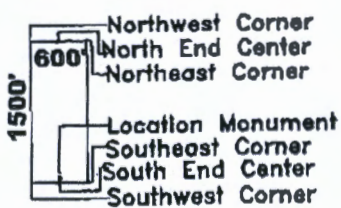
[Signature]
Timothy M. Marsh, Agent for:

Bell Resources (Nevada) Corporation
4750 North Bonanza Avenue
Tucson, Arizona 85749

Claim Map for SAY Lode Claim

AMC460878

Typical Claims



Location Monuments are 10' from end lines.

SAY 114,115,124 are 1500'x400'
SAY 128 is 700'x600'

The above map depicts the SAY 113 lode mining claim, which is located in Section(s) 6 Township 17 North, Range 12 West, Gila and Salt River Meridian, Mohave County, Arizona. The claim corners, end centers, and location monument are marked by 2 inch by 2 inch by 5 foot wooden posts with aluminum tags. The bearings and distances between claim corners are as depicted on the map.

RECEIVED
AZ STATE OFFICE
AUG 28 A 8:04
MOHAVE COUNTY, ARIZONA

Recording requested by:
Bell Resources (Nevada) Corporation

When recorded return to:
Tim Marsh
4750 N. Bonanza Avenue
Tucson, AZ 85749

FEE# 2020040196

OFFICIAL RECORDS
OF MOHAVE COUNTY
KRISTI BLAIR,
COUNTY RECORDER



07/21/2020 01:08 PM Fee: \$30.00

PAGE: 1 of 1

LOCATION NOTICE FOR LODE MINING CLAIM

NOTICE IS HEREBY GIVEN that the SAY 114 lode mining claim has been located by Bell Resources (Nevada) Corporation, 4750 North Bonanza Avenue, Tucson, Arizona 85749. The general course of this claim is east-west and it is situated in Mohave County, Arizona. This claim is 1500 feet in length and 400 feet in width. This claim runs from the location monument on which this location notice is posted approximately 10 feet in an easterly direction to the east end line and 1490 feet in a westerly direction to the west end line with 200 feet on each side of the monument of location and centerline of the claim. This claim is marked by six monuments, one at each corner and one at the center of each end line of the claim.

The location monument on which this notice is posted is situated within Section 6, Township 17 North, Range 12 West, Gila and Salt River Meridian, Arizona, and this claim occupies the following Quarter Section(s), Section(s), Township(s), and Range(s):

Quarter Section	Section	Township	Range
SW	6	17 North	12 West
NW	7	17 North	12 West
		17 North	12 West
		17 North	12 West

The Northeast corner of this claim is approximately 1381 feet East and 4835 feet South of the surveyed Northwest corner of Section 1, Township 17 North, Range 13 West, Gila and Salt River Meridian.

DATED AND POSTED on the ground this
14th day of July, 2020.

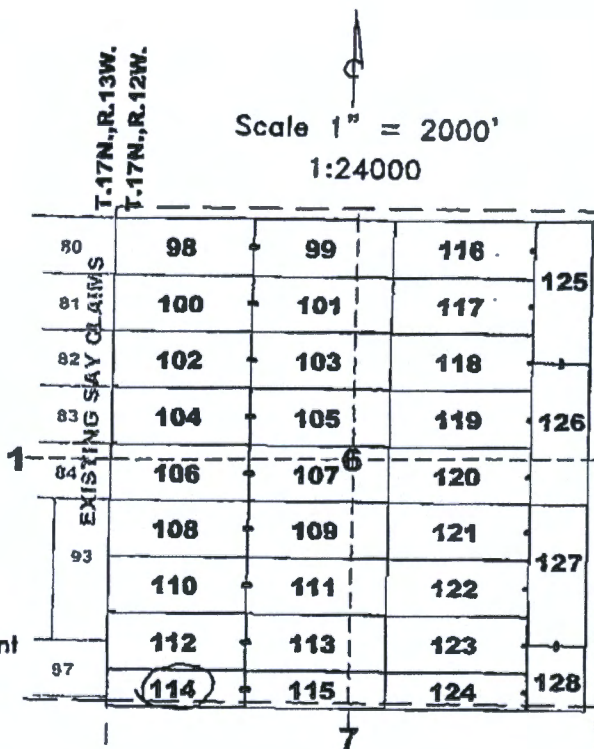
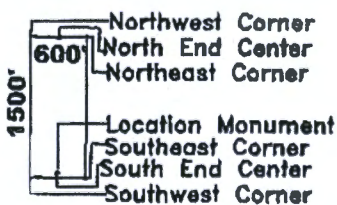
Timothy M. Marsh
Timothy M. Marsh, Agent for:

Claim Map for SAY Lode Claim

Bell Resources (Nevada) Corporation
4750 North Bonanza Avenue
Tucson, Arizona 85749

Scale 1" = 2000'
1:24000

Typical Claims



Location Monuments are 10' from end lines.

SAY 114,115,124 are 1500'x400'
SAY 128 is 700'x600'

AMC460879

The above map depicts the SAY 114 lode mining claim, which is located in Section(s) 6, 7 Township 17 North, Range 12 West, Gila and Salt River Meridian, Mohave County, Arizona. The claim corners, end centers, and location monument are marked by 2 inch by 2 inch by 5 foot wooden posts with aluminum tags. The bearings and distances between claim corners are as depicted on the map.

RECEIVED
BLM STATE OFFICE
2020 AUG 28 A 8:04
PHOENIX ARIZONA

OFFICIAL RECORDS
OF MOHAVE COUNTY
KRISTI BLAIR,
COUNTY RECORDER



07/21/2020 01:08 PM Fee: \$30.00

PAGE: 1 of 1

Recording requested by:
Bell Resources (Nevada) Corporation

When recorded return to:
Tim Marsh
4750 N. Bonanza Avenue
Tucson, AZ 85749

LOCATION NOTICE FOR LODE MINING CLAIM

NOTICE IS HEREBY GIVEN that the SAY 115 lode mining claim has been located by Bell Resources (Nevada) Corporation, 4750 North Bonanza Avenue, Tucson, Arizona 85749. The general course of this claim is east-west and it is situated in Mohave County, Arizona. This claim is 1500 feet in length and 400 feet in width. This claim runs from the location monument on which this location notice is posted approximately 1490 feet in an easterly direction to the east end line and 10 feet in a westerly direction to the west end line with 200 feet on each side of the monument of location and centerline of the claim. This claim is marked by six monuments, one at each corner and one at the center of each end line of the claim.

The location monument on which this notice is posted is situated within Section 6, Township 17 North, Range 12 West, Gila and Salt River Meridian, Arizona, and this claim occupies the following Quarter Section(s), Section(s), Township(s), and Range(s):

Quarter Section	Section	Township	Range
<u>SW</u>	<u>6</u>	17 North	12 West
<u>SE</u>	<u>6</u>	17 North	12 West
<u>NW</u>	<u>7</u>	17 North	12 West
<u>NE</u>	<u>7</u>	17 North	12 West

The Northeast corner of this claim is approximately 2881 feet East and 4872 feet South of the surveyed Northwest corner of Section 1, Township 17 North, Range 13 West, Gila and Salt River Meridian.

DATED AND POSTED on the ground this
14th day of July, 2020.

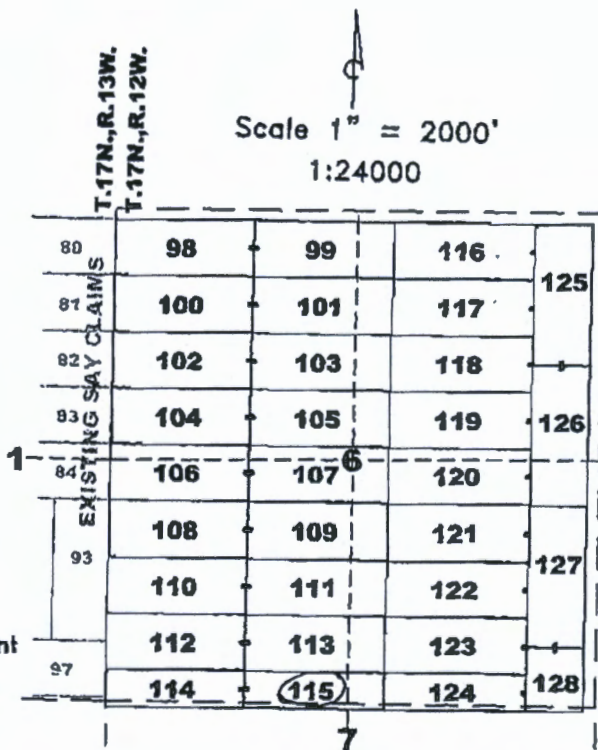
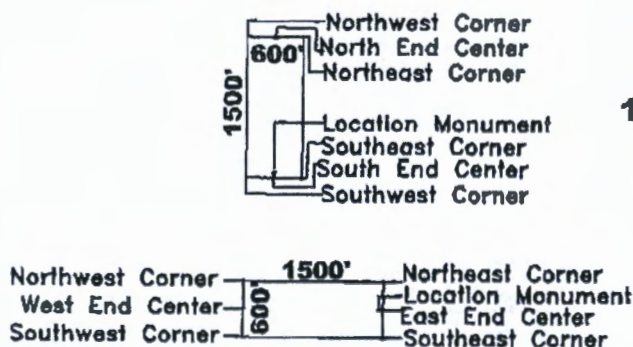
Timothy M. Marsh, Agent for:

Claim Map for SAY Lode Claim

Bell Resources (Nevada) Corporation
4750 North Bonanza Avenue
Tucson, Arizona 85749

Scale 1" = 2000'
1:24000

Typical Claims



Location Monuments are 10' from end lines.

SAY 114,115,124 are 1500'x400'
SAY 128 is 700'x600'

The above map depicts the SAY 115 lode mining claim, which is located in Section(s) 6, 7 Township 17 North, Range 12 West, Gila and Salt River Meridian, Mohave County, Arizona. The claim corners, end centers, and location monument are marked by 2 inch by 2 inch by 5 foot wooden posts with aluminum tags. The bearings and distances between claim corners are as depicted on the map.

RECEIVED
MILAZ STATE OFFICE
AUG 28 A 8:05
MOHAVE COUNTY, ARIZONA

AMC460880



Recording requested by:
Bell Resources (Nevada) Corporation

When recorded return to:
Tim Marsh
4750 N. Bonanza Avenue
Tucson, AZ 85749

LOCATION NOTICE FOR LODE MINING CLAIM

NOTICE IS HEREBY GIVEN that the SAY 116 lode mining claim has been located by Bell Resources (Nevada) Corporation, 4750 North Bonanza Avenue, Tucson, Arizona 85749. The general course of this claim is east-west and it is situated in Mohave County, Arizona. This claim is 1500 feet in length and 600 feet in width. This claim runs from the location monument on which this location notice is posted approximately 10 feet in an easterly direction to the east end line and 1490 feet in a westerly direction to the west end line with 300 feet on each side of the monument of location and centerline of the claim. This claim is marked by six monuments, one at each corner and one at the center of each end line of the claim.

The location monument on which this notice is posted is situated within Section 6, Township 17 North, Range 12 West, Gila and Salt River Meridian, Arizona, and this claim occupies the following Quarter Section(s), Section(s), Township(s), and Range(s):

Quarter Section	Section	Township	Range
<u>NE</u>	<u>6</u>	17 North	12 West
---	---	17 North	12 West
---	---	17 North	12 West
---	---	17 North	12 West

The Northeast corner of this claim is approximately 4500 feet East and 111 feet South of the surveyed Northwest corner of Section 1, Township 17 North, Range 13 West, Gila and Salt River Meridian.

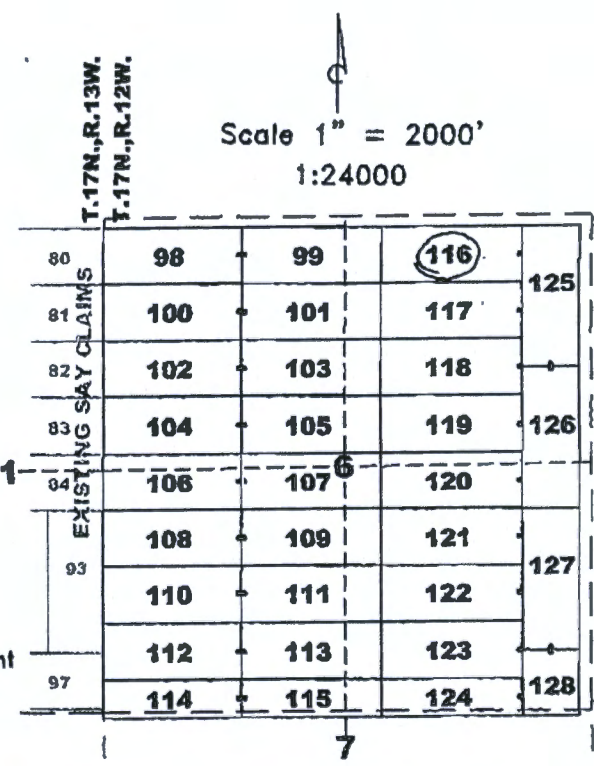
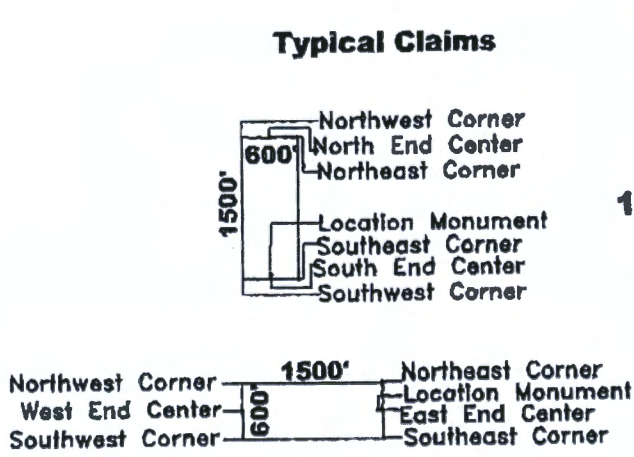
DATED AND POSTED on the ground this 12th day of July, 2020.

Claim Map for SAY Lode Claim

[Signature]
Timothy M. Marsh, Agent for:

Bell Resources (Nevada) Corporation
4750 North Bonanza Avenue
Tucson, Arizona 85749

AMC460881



Location Monuments are 10' from end lines.

SAY 114,115,124 are 1500'x400'
SAY 128 is 700'x600'

The above map depicts the SAY 116 lode mining claim, which is located in Section(s) 6 Township 17 North, Range 12 West, Gila and Salt River Meridian, Mohave County, Arizona. The claim corners, end centers, and location monument are marked by 2 inch by 2 inch by 5 foot wooden posts with aluminum tags. The bearings and distances between claim corners are as depicted on the map.

PHOENIX ARIZONA
2020 JUN 28 A 8:05
RECEIVED
BLM STATE OFFICE

Recording requested by:
Bell Resources (Nevada) Corporation

When recorded return to:
Tim Marsh
4750 N. Bonanza Avenue
Tucson, AZ 85749

FEE# 2020040199

OFFICIAL RECORDS
OF MOHAVE COUNTY
KRISTI BLAIR,
COUNTY RECORDER



07/21/2020 01:08 PM Fee: \$30.00

PAGE: 1 of 1

LOCATION NOTICE FOR LODE MINING CLAIM

NOTICE IS HEREBY GIVEN that the SAY 117 lode mining claim has been located by Bell Resources (Nevada) Corporation, 4750 North Bonanza Avenue, Tucson, Arizona 85749. The general course of this claim is east-west and it is situated in Mohave County, Arizona. This claim is 1500 feet in length and 600 feet in width. This claim runs from the location monument on which this location notice is posted approximately 10 feet in an easterly direction to the east end line and 1490 feet in a westerly direction to the west end line with 300 feet on each side of the monument of location and centerline of the claim. This claim is marked by six monuments, one at each corner and one at the center of each end line of the claim.

The location monument on which this notice is posted is situated within Section 6, Township 17 North, Range 12 West, Gila and Salt River Meridian, Arizona, and this claim occupies the following Quarter Section(s), Section(s), Township(s), and Range(s):

Quarter Section	Section	Township	Range
<u>NE</u>	<u>6</u>	17 North	12 West
_____	_____	17 North	12 West
_____	_____	17 North	12 West
_____	_____	17 North	12 West

The Northeast corner of this claim is approximately 4484 feet East and 711 feet South of the surveyed Northwest corner of Section 1, Township 17 North, Range 13 West, Gila and Salt River Meridian.

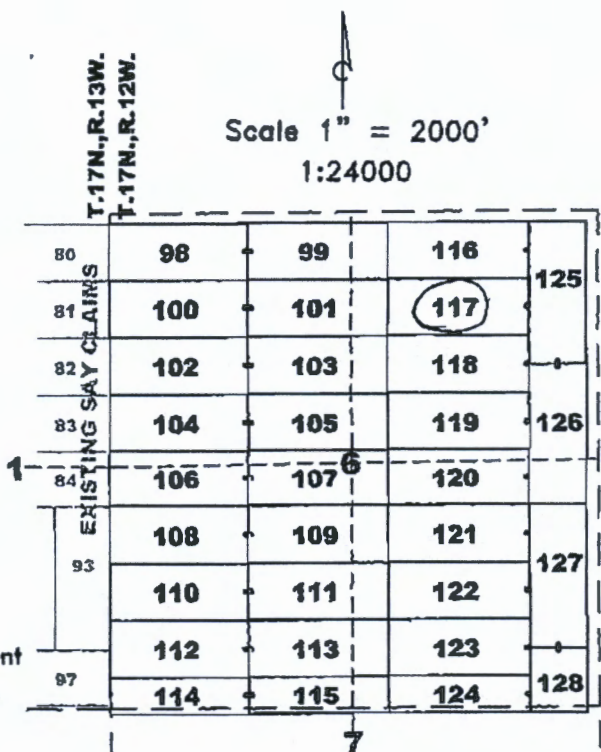
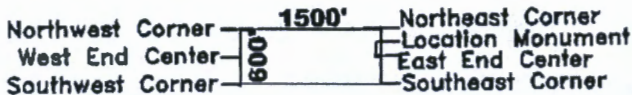
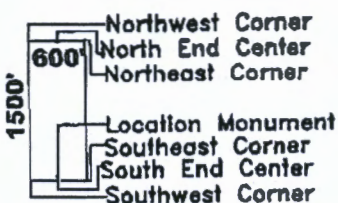
DATED AND POSTED on the ground this
12th day of July, 2020.

[Signature]
Timothy M. Marsh, Agent for:

Claim Map for SAY Lode Claim

Bell Resources (Nevada) Corporation
4750 North Bonanza Avenue
Tucson, Arizona 85749

Typical Claims



Location Monuments are 10' from end lines.

SAY 114,115,124 are 1500'x400'
SAY 128 is 700'x600'

The above map depicts the SAY 117 lode mining claim, which is located in Section(s) 6 Township 17 North, Range 12 West, Gila and Salt River Meridian, Mohave County, Arizona. The claim corners, end centers, and location monument are marked by 2 inch by 2 inch by 5 foot wooden posts with aluminum tags. The bearings and distances between claim corners are as depicted on the map.

RECEIVED
BLM AZ STATE OFFICE
2020 AUG 28 A 8:05
PHOENIX, ARIZONA

AMC460882

FEE# 2020040200

OFFICIAL RECORDS
OF MOHAVE COUNTY
KRISTI BLAIR,
COUNTY RECORDER



07/21/2020 01:08 PM Fee: \$30.00

PAGE: 1 of 1

Recording requested by:
Bell Resources (Nevada) Corporation

When recorded return to:
Tim Marsh
4750 N. Bonanza Avenue
Tucson, AZ 85749

LOCATION NOTICE FOR LODE MINING CLAIM

NOTICE IS HEREBY GIVEN that the SAY 118 lode mining claim has been located by Bell Resources (Nevada) Corporation, 4750 North Bonanza Avenue, Tucson, Arizona 85749. The general course of this claim is east-west and it is situated in Mohave County, Arizona. This claim is 1500 feet in length and 600 feet in width. This claim runs from the location monument on which this location notice is posted approximately 10 feet in an easterly direction to the east end line and 1490 feet in a westerly direction to the west end line with 300 feet on each side of the monument of location and centerline of the claim. This claim is marked by six monuments, one at each corner and one at the center of each end line of the claim.

The location monument on which this notice is posted is situated within Section 6, Township 17 North, Range 12 West, Gila and Salt River Meridian, Arizona, and this claim occupies the following Quarter Section(s), Section(s), Township(s), and Range(s):

Quarter Section	Section	Township	Range
<u>NE</u>	<u>6</u>	17 North	12 West
_____	_____	17 North	12 West
_____	_____	17 North	12 West
_____	_____	17 North	12 West

The Northeast corner of this claim is approximately 4469 feet East and 1310 feet South of the surveyed Northwest corner of Section 1, Township 17 North, Range 13 West, Gila and Salt River Meridian.

DATED AND POSTED on the ground this 12th day of July, 2020.

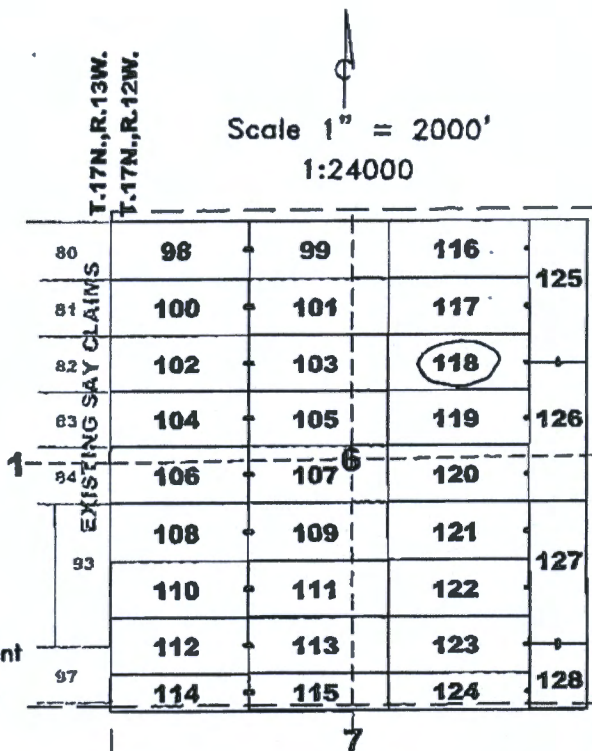
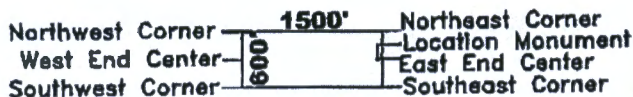
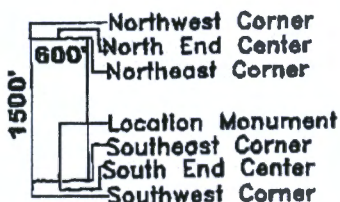
Claim Map for SAY Lode Claim

Timothy M. Marsh
Timothy M. Marsh, Agent for:

Bell Resources (Nevada) Corporation
4750 North Bonanza Avenue
Tucson, Arizona 85749

AMC460883

Typical Claims



Location Monuments are 10' from end lines.

SAY 114,115,124 are 1500'x400'
SAY 128 is 700'x600'

The above map depicts the SAY 118 lode mining claim, which is located in Section(s) 6 Township 17 North, Range 12 West, Gila and Salt River Meridian, Mohave County, Arizona. The claim corners, end centers, and location monument are marked by 2 inch by 2 inch by 5 foot wooden post with aluminum tags. The bearings and distances between claim corners are as depicted on the map.

RECEIVED
BIM AZ STATE OFFICE
2020 AUG 28 A 8:05
PHOENIX, ARIZONA

OFFICIAL RECORDS
OF MOHAVE COUNTY
KRISTI BLAIR,
COUNTY RECORDER



07/21/2020 01:08 PM Fee: \$30.00

PAGE: 1 of 1

Recording requested by:
Bell Resources (Nevada) Corporation

When recorded return to:
Tim Marsh
4750 N. Bonanza Avenue
Tucson, AZ 85749

LOCATION NOTICE FOR LODE MINING CLAIM

NOTICE IS HEREBY GIVEN that the SAY 119 lode mining claim has been located by Bell Resources (Nevada) Corporation, 4750 North Bonanza Avenue, Tucson, Arizona 85749. The general course of this claim is east-west and it is situated in Mohave County, Arizona. This claim is 1500 feet in length and 600 feet in width. This claim runs from the location monument on which this location notice is posted approximately 10 feet in an easterly direction to the east end line and 1490 feet in a westerly direction to the west end line with 300 feet on each side of the monument of location and centerline of the claim. This claim is marked by six monuments, one at each corner and one at the center of each end line of the claim.

The location monument on which this notice is posted is situated within Section 6, Township 17 North, Range 12 West, Gila and Salt River Meridian, Arizona, and this claim occupies the following Quarter Section(s), Section(s), Township(s), and Range(s):

Quarter Section	Section	Township	Range
<u>NE</u>	<u>6</u>	17 North	12 West
---	---	17 North	12 West
---	---	17 North	12 West
---	---	17 North	12 West

The Northeast corner of this claim is approximately 4454 feet East and 1910 feet South of the surveyed Northwest corner of Section 1, Township 17 North, Range 13 West, Gila and Salt River Meridian.

DATED AND POSTED on the ground this
12th day of July, 2020.

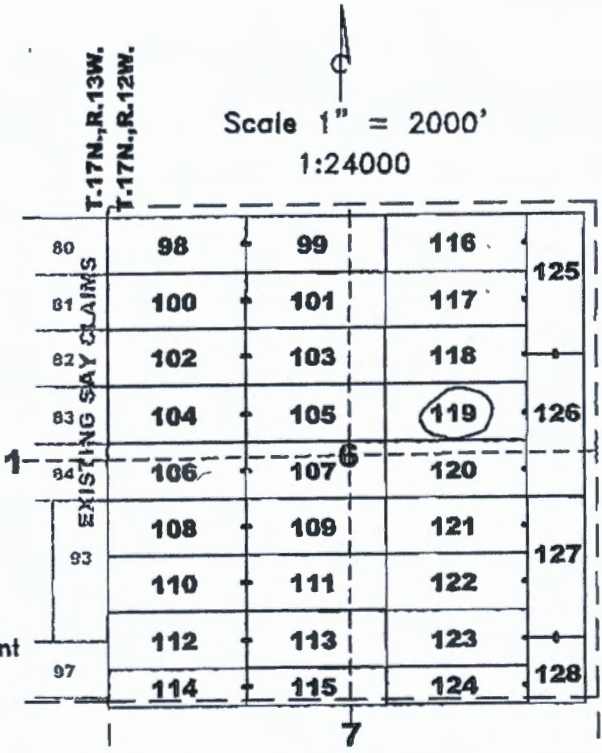
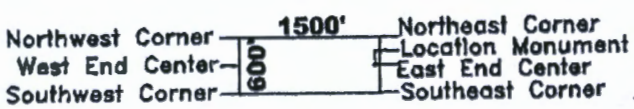
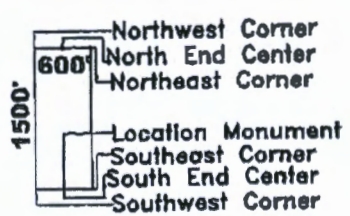
Timothy M. Marsh
Timothy M. Marsh, Agent for:

Claim Map for SAY Lode Claim

Bell Resources (Nevada) Corporation
4750 North Bonanza Avenue
Tucson, Arizona 85749

Scale 1" = 2000'
1:24000

Typical Claims



Location Monuments are 10' from end lines.

SAY 114,115,124 are 1500'x400'
SAY 128 is 700'x600'

The above map depicts the SAY 119 lode mining claim, which is located in Section(s) 6 Township 17 North, Range 12 West, Gila and Salt River Meridian, Mohave County, Arizona. The claim corners, end centers, and location monument are marked by 2 inch by 2 inch by 5 foot wooden posts with aluminum tags. The bearings and distances between claim corners are as depicted on the map.

RECEIVED
BLM STATE OFFICE
2020 JUL 28 A 8:05
PHOENIX, ARIZONA

AMC460884

Recording requested by:
Bell Resources (Nevada) Corporation

OFFICIAL RECORDS
OF MOHAVE COUNTY
KRISTI BLAIR,
COUNTY RECORDER



07/21/2020 01:08 PM Fee: \$30.00

When recorded return to:
Tim Marsh
4750 N. Bonanza Avenue
Tucson, AZ 85749

PAGE: 1 of 1

LOCATION NOTICE FOR LODE MINING CLAIM

NOTICE IS HEREBY GIVEN that the SAY 120 lode mining claim has been located by Bell Resources (Nevada) Corporation, 4750 North Bonanza Avenue, Tucson, Arizona 85749. The general course of this claim is east-west and it is situated in Mohave County, Arizona. This claim is 1500 feet in length and 600 feet in width. This claim runs from the location monument on which this location notice is posted approximately 10 feet in an easterly direction to the east end line and 1490 feet in a westerly direction to the west end line with 300 feet on each side of the monument of location and centerline of the claim. This claim is marked by six monuments, one at each corner and one at the center of each end line of the claim.

The location monument on which this notice is posted is situated within Section 6, Township 17 North, Range 12 West, Gila and Salt River Meridian, Arizona, and this claim occupies the following Quarter Section(s), Section(s), Township(s), and Range(s):

Quarter Section	Section	Township	Range
<u>NE</u>	<u>6</u>	17 North	12 West
<u>SE</u>	<u>6</u>	17 North	12 West
_____	_____	17 North	12 West
_____	_____	17 North	12 West

The Northeast corner of this claim is approximately 4440 feet East and 2510 feet South of the surveyed Northwest corner of Section 1, Township 17 North, Range 13 West, Gila and Salt River Meridian.

DATED AND POSTED on the ground this 12th day of July, 2020.

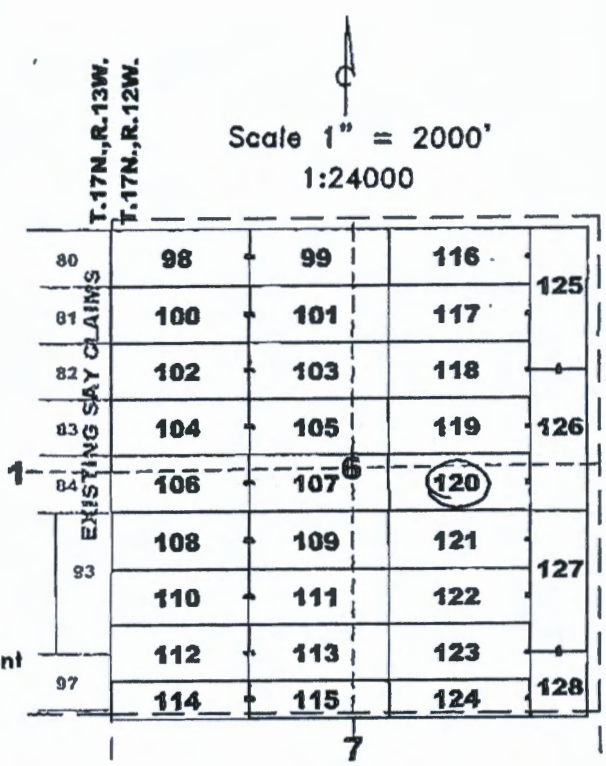
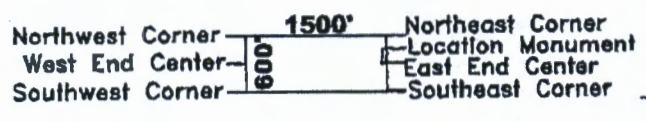
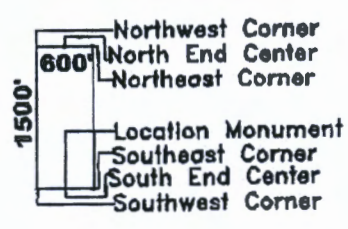
Claim Map for SAY Lode Claim

Timothy M. Marsh
Timothy M. Marsh, Agent for:

Bell Resources (Nevada) Corporation
4750 North Bonanza Avenue
Tucson, Arizona 85749

AMC460885

Typical Claims



Location Monuments are 10' from end lines.

SAY 114,115,124 are 1500'x400'
SAY 128 is 700'x600'

The above map depicts the SAY 120 lode mining claim, which is located in Section(s) 6 Township 17 North, Range 12 West, Gila and Salt River Meridian, Mohave County, Arizona. The claim corners, end centers, and location monument are marked by 2 inch by 2 inch by 5 foot wooden posts with aluminum tags. The bearings and distances between claim corners are as depicted on the map.

RECEIVED
MUNICIPAL CLERK
MOHAVE COUNTY, ARIZONA
AUG 28 A 8:05



Recording requested by:
Bell Resources (Nevada) Corporation

When recorded return to:
Tim Marsh
4750 N. Bonanza Avenue
Tucson, AZ 85749

LOCATION NOTICE FOR LODE MINING CLAIM

NOTICE IS HEREBY GIVEN that the SAY 121 lode mining claim has been located by Bell Resources (Nevada) Corporation, 4750 North Bonanza Avenue, Tucson, Arizona 85749. The general course of this claim is east-west and it is situated in Mohave County, Arizona. This claim is 1500 feet in length and 600 feet in width. This claim runs from the location monument on which this location notice is posted approximately 10 feet in an easterly direction to the east end line and 1490 feet in a westerly direction to the west end line with 300 feet on each side of the monument of location and centerline of the claim. This claim is marked by six monuments, one at each corner and one at the center of each end line of the claim.

The location monument on which this notice is posted is situated within Section 6, Township 17 North, Range 12 West, Gila and Salt River Meridian, Arizona, and this claim occupies the following Quarter Section(s), Section(s), Township(s), and Range(s):

Quarter Section	Section	Township	Range
<u>SE</u>	<u>6</u>	17 North	12 West
_____	_____	17 North	12 West
_____	_____	17 North	12 West
_____	_____	17 North	12 West

The Northeast corner of this claim is approximately 4425 feet East and 3110 feet South of the surveyed Northwest corner of Section 1, Township 17 North, Range 13 West, Gila and Salt River Meridian.

DATED AND POSTED on the ground this 11th day of July 2020.

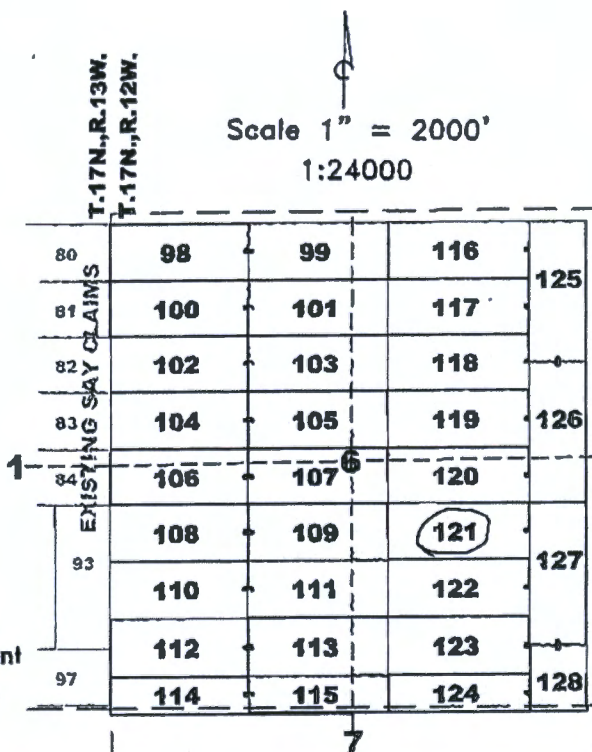
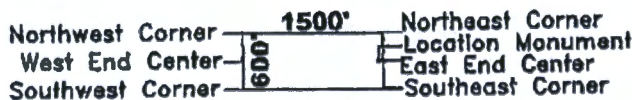
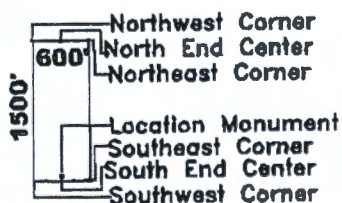
Timothy M. Marsh
Timothy M. Marsh, Agent for:

Claim Map for SAY Lode Claim

Bell Resources (Nevada) Corporation
4750 North Bonanza Avenue
Tucson, Arizona 85749

AMC460886

Typical Claims



Location Monuments are 10' from end lines.

SAY 114,115,124 are 1500'x400'
SAY 128 is 700'x600'

The above map depicts the SAY 121 lode mining claim, which is located in Section(s) 6 Township 17 North, Range 12 West, Gila and Salt River Meridian, Mohave County, Arizona. The claim corners, end centers, and location monument are marked by 2 inch by 2 inch by 5 foot wooden posts with aluminum tags. The bearings and distances between claim corners are as depicted on the map.

RECEIVED
MIL AZ STATE OFFICE
AUG 28 A 8:05
SHERIFF, ARIZONA

OFFICIAL RECORDS
OF MOHAVE COUNTY
KRISTI BLAIR,
COUNTY RECORDER



07/21/2020 01:08 PM Fee: \$30.00
PAGE: 1 of 1

Recording requested by:
Bell Resources (Nevada) Corporation

When recorded return to:
Tim Marsh
4750 N. Bonanza Avenue
Tucson, AZ 85749

LOCATION NOTICE FOR LODE MINING CLAIM

NOTICE IS HEREBY GIVEN that the SAY 122 lode mining claim has been located by Bell Resources (Nevada) Corporation, 4750 North Bonanza Avenue, Tucson, Arizona 85749. The general course of this claim is east-west and it is situated in Mohave County, Arizona. This claim is 1500 feet in length and 600 feet in width. This claim runs from the location monument on which this location notice is posted approximately 10 feet in an easterly direction to the east end line and 1490 feet in a westerly direction to the west end line with 300 feet on each side of the monument of location and centerline of the claim. This claim is marked by six monuments, one at each corner and one at the center of each end line of the claim.

The location monument on which this notice is posted is situated within Section 6, Township 17 North, Range 12 West, Gila and Salt River Meridian, Arizona, and this claim occupies the following Quarter Section(s), Section(s), Township(s), and Range(s):

Quarter Section	Section	Township	Range
<u>SE</u>	<u>6</u>	17 North	12 West
---	---	17 North	12 West
---	---	17 North	12 West
---	---	17 North	12 West

The Northeast corner of this claim is approximately 4410 feet East and 3710 feet South of the surveyed Northwest corner of Section 1, Township 17 North, Range 13 West, Gila and Salt River Meridian.

DATED AND POSTED on the ground this
11th day of July, 2020.

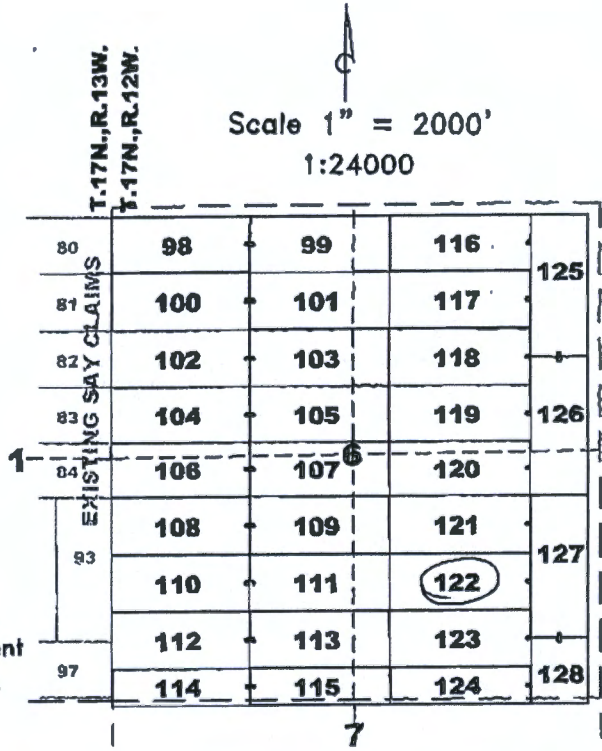
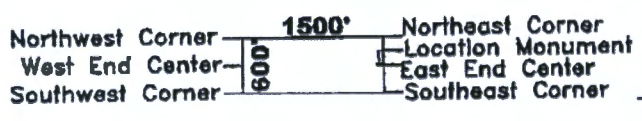
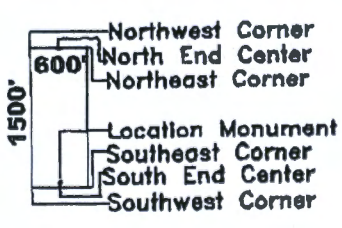
Claim Map for SAY Lode Claim

[Signature]
Timothy M. Marsh, Agent for:

Bell Resources (Nevada) Corporation
4750 North Bonanza Avenue
Tucson, Arizona 85749

AMC460887

Typical Claims



Location Monuments are 10' from end lines.

SAY 114,115,124 are 1500'x400'
SAY 128 is 700'x600'

The above map depicts the SAY 122 lode mining claim, which is located in Section(s) 6 Township 17 North, Range 12 West, Gila and Salt River Meridian, Mohave County, Arizona. The claim corners, end centers, and location monument are marked by 2 inch by 2 inch by 5 foot wooden posts with aluminum tags. The bearings and distances between claim corners are as depicted on the map.

RECEIVED
BLM AZ STATE OFFICE
AUG 28 A 8:05
MORNING, ARIZONA



Recording requested by:
Bell Resources (Nevada) Corporation

When recorded return to:
Tim Marsh
4750 N. Bonanza Avenue
Tucson, AZ 85749

LOCATION NOTICE FOR LODE MINING CLAIM

NOTICE IS HEREBY GIVEN that the SAY 123 lode mining claim has been located by Bell Resources (Nevada) Corporation, 4750 North Bonanza Avenue, Tucson, Arizona 85749. The general course of this claim is east-west and it is situated in Mohave County, Arizona. This claim is 1500 feet in length and 600 feet in width. This claim runs from the location monument on which this location notice is posted approximately 10 feet in an easterly direction to the east end line and 1490 feet in a westerly direction to the west end line with 300 feet on each side of the monument of location and centerline of the claim. This claim is marked by six monuments, one at each corner and one at the center of each end line of the claim.

The location monument on which this notice is posted is situated within Section 6, Township 17 North, Range 12 West, Gila and Salt River Meridian, Arizona, and this claim occupies the following Quarter Section(s), Section(s), Township(s), and Range(s):

Quarter Section	Section	Township	Range
<u>SE</u>	<u>6</u>	17 North	12 West
_____	_____	17 North	12 West
_____	_____	17 North	12 West
_____	_____	17 North	12 West

The Northeast corner of this claim is approximately 4396 feet East and 4310 feet South of the surveyed Northwest corner of Section 1, Township 17 North, Range 13 West, Gila and Salt River Meridian.

DATED AND POSTED on the ground this 11th day of July, 2020.

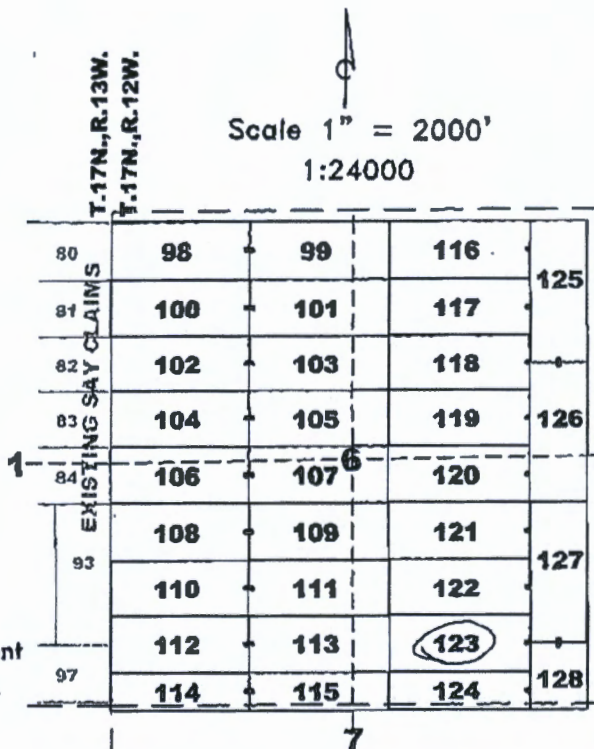
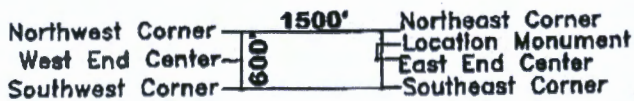
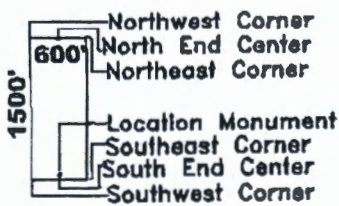
[Signature]
Timothy M. Marsh, Agent for:

Claim Map for SAY Lode Claim

Bell Resources (Nevada) Corporation
4750 North Bonanza Avenue
Tucson, Arizona 85749

Scale 1" = 2000'
1:24000

Typical Claims



Location Monuments are 10' from end lines.

SAY 114,115,124 are 1500'x400'
SAY 128 is 700'x600'

The above map depicts the SAY 123 lode mining claim, which is located in Section(s) 6 Township 17 North, Range 12 West, Gila and Salt River Meridian, Mohave County, Arizona. The claim corners, end centers, and location monument are marked by 2 inch by 2 inch by 5 foot wooden posts with aluminum tags. The bearings and distances between claim corners are as depicted on the map.

PHOENIX ARIZONA
2020 JUL 28 A 8:05
RECEIVED
BLM AZ STATE OFFICE

AMC460888

Recording requested by:
Bell Resources (Nevada) Corporation

OFFICIAL RECORDS
OF MOHAVE COUNTY
KRISTI BLAIR,
COUNTY RECORDER



07/21/2020 01:08 PM Fee: \$30.00

When recorded return to:
Tim Marsh
4750 N. Bonanza Avenue
Tucson, AZ 85749

PAGE: 1 of 1

LOCATION NOTICE FOR LODE MINING CLAIM

NOTICE IS HEREBY GIVEN that the SAY 124 lode mining claim has been located by Bell Resources (Nevada) Corporation, 4750 North Bonanza Avenue, Tucson, Arizona 85749. The general course of this claim is east-west and it is situated in Mohave County, Arizona. This claim is 1500 feet in length and 400 feet in width. This claim runs from the location monument on which this location notice is posted approximately 10 feet in an easterly direction to the east end line and 1490 feet in a westerly direction to the west end line with 200 feet on each side of the monument of location and centerline of the claim. This claim is marked by six monuments, one at each corner and one at the center of each end line of the claim.

The location monument on which this notice is posted is situated within Section 6, Township 17 North, Range 12 West, Gila and Salt River Meridian, Arizona, and this claim occupies the following Quarter Section(s), Section(s), Township(s), and Range(s):

Quarter Section	Section	Township	Range
<u>SE</u>	<u>6</u>	17 North	12 West
<u>NE</u>	<u>7</u>	17 North	12 West
---	---	17 North	12 West
---	---	17 North	12 West

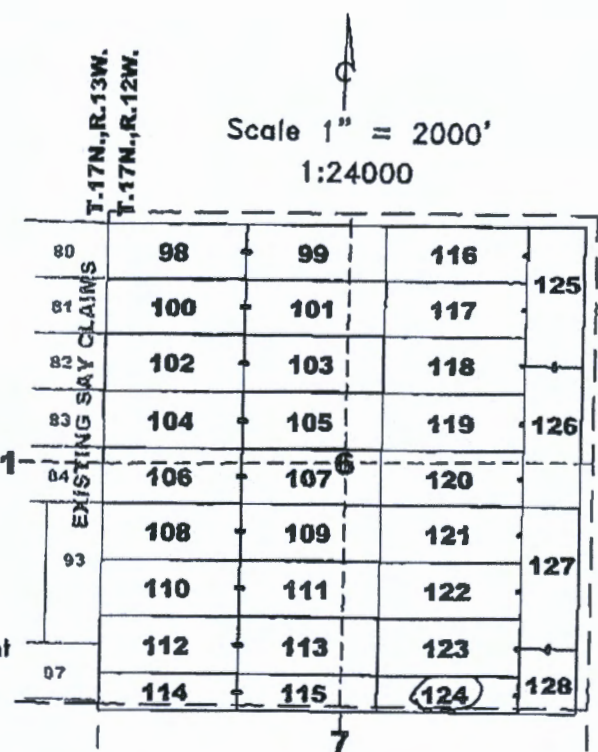
The Northeast corner of this claim is approximately 4380 feet East and 4909 feet South of the surveyed Northwest corner of Section 1, Township 17 North, Range 13 West, Gila and Salt River Meridian.

DATED AND POSTED on the ground this 11th day of July, 2020.

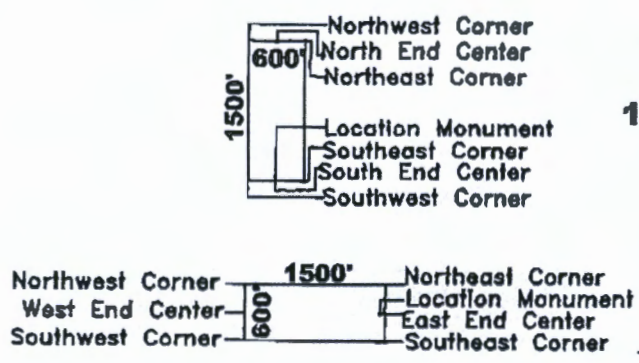
Claim Map for SAY Lode Claim

[Signature]
Timothy M. Marsh, Agent for:

Bell Resources (Nevada) Corporation
4750 North Bonanza Avenue
Tucson, Arizona 85749



Typical Claims



Location Monuments are 10' from end lines.
SAY 114,115,124 are 1500'x400'
SAY 128 is 700'x600'

The above map depicts the SAY 124 lode mining claim, which is located in Section 6 Township 17 North, Range 12 West, Gila and Salt River Meridian, Mohave County, Arizona. The claim corners, end centers, and location monument are marked by 2 inch by 2 inch by 5 foot wooden posts with aluminum tags. The bearings and distances between claim corners are as depicted on the map.

RECEIVED
 JUL 28 8:05
 ARIZONA STATE OFFICE

AMC460889



Recording requested by:
Bell Resources (Nevada) Corporation

When recorded return to:
Tim Marsh
4750 N. Bonanza Avenue
Tucson, AZ 85749

LOCATION NOTICE FOR LODE MINING CLAIM

NOTICE IS HEREBY GIVEN that the SAY 125 lode mining claim has been located by Bell Resources (Nevada) Corporation, 4750 North Bonanza Avenue, Tucson, Arizona 85749. The general course of this claim is north-south and it is situated in Mohave County, Arizona. This claim is 1500 feet in length and 600 feet in width. This claim runs from the location monument on which this location notice is posted approximately 1490 feet in a northerly direction to the north end line and 10 feet in a southerly direction to the south end line with 300 feet on each side of the monument of location and centerline of the claim. This claim is marked by six monuments, one at each corner and one at the center of each end line of the claim.

The location monument on which this notice is posted is situated within Section 6, Township 17 North, Range 12 West, Gila and Salt River Meridian, Arizona, and this claim occupies the following Quarter Section(s), Section(s), Township(s), and Range(s):

Quarter Section	Section	Township	Range
<u>NE</u>	<u>6</u>	17 North	12 West
_____	_____	17 North	12 West
_____	_____	17 North	12 West
_____	_____	17 North	12 West

The Northeast corner of this claim is approximately 5098 feet East and 126 feet South of the surveyed Northwest corner of Section 1, Township 17 North, Range 13 West, Gila and Salt River Meridian.

DATED AND POSTED on the ground this 12th day of July, 2020.

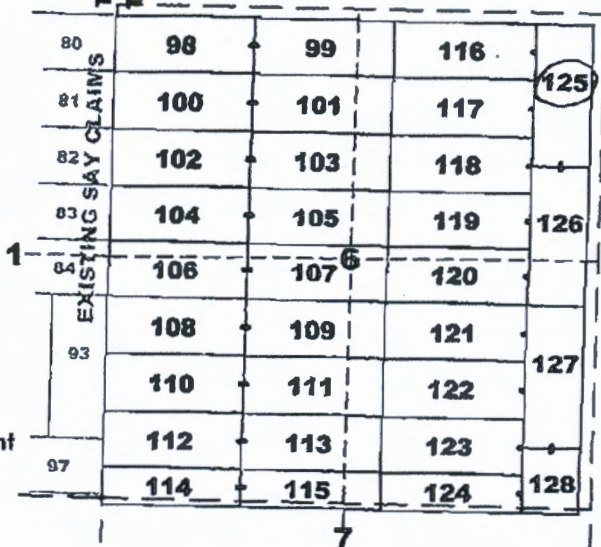
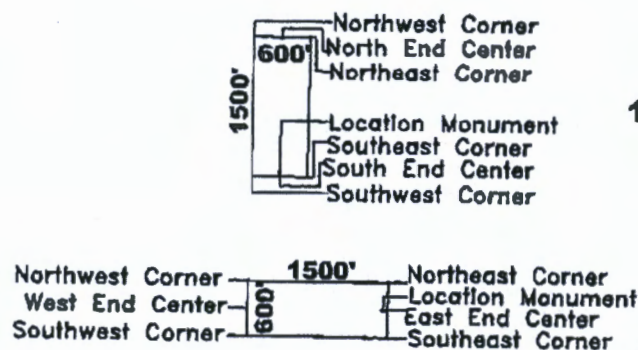
Claim Map for SAY Lode Claim

Timothy M. Marsh
Timothy M. Marsh, Agent for:

Bell Resources (Nevada) Corporation
4750 North Bonanza Avenue
Tucson, Arizona 85749

Scale 1" = 2000'
1:24000

Typical Claims



Location Monuments are 10' from end lines.

SAY 114,115,124 are 1500'x400'
SAY 128 is 700'x600'

The above map depicts the SAY 125 lode mining claim, which is located in Section(s) 6 Township 17 North, Range 12 West, Gila and Salt River Meridian, Mohave County, Arizona. The claim corners, end centers, and location monument are marked by 2 inch by 2 inch by 5 foot wooden posts with aluminum tags. The bearings and distances between claim corners are as depicted on the map.

RECEIVED
AZ STATE OFFICE
AUG 28 A 8:05
MOHAVE COUNTY, ARIZONA

AMC460890

OFFICIAL RECORDS
OF MOHAVE COUNTY
KRISTI BLAIR,
COUNTY RECORDER



07/21/2020 01:08 PM Fee: \$30.00

PAGE: 1 of 1

Recording requested by:
Bell Resources (Nevada) Corporation

When recorded return to:
Tim Marsh
4750 N. Bonanza Avenue
Tucson, AZ 85749

LOCATION NOTICE FOR LODE MINING CLAIM


NOTICE IS HEREBY GIVEN that the SAY 126 lode mining claim has been located by Bell Resources (Nevada) Corporation, 4750 North Bonanza Avenue, Tucson, Arizona 85749. The general course of this claim is north-south and it is situated in Mohave County, Arizona. This claim is 1500 feet in length and 600 feet in width. This claim runs from the location monument on which this location notice is posted approximately 10 feet in a northerly direction to the north end line and 1490 feet in a southerly direction to the south end line with 300 feet on each side of the monument of location and centerline of the claim. This claim is marked by six monuments, one at each corner and one at the center of each end line of the claim.

The location monument on which this notice is posted is situated within Section 6, Township 17 North, Range 12 West, Gila and Salt River Meridian, Arizona, and this claim occupies the following Quarter Section(s), Section(s), Township(s), and Range(s):

Quarter Section	Section	Township	Range
<u>NE</u>	<u>6</u>	17 North	12 West
<u>SE</u>	<u>6</u>	17 North	12 West
_____	_____	17 North	12 West
_____	_____	17 North	12 West

The Northeast corner of this claim is approximately 5061 feet East and 1625 feet South of the surveyed Northwest corner of Section 1, Township 17 North, Range 13 West, Gila and Salt River Meridian.

DATED AND POSTED on the ground this
12th day of July, 2020.

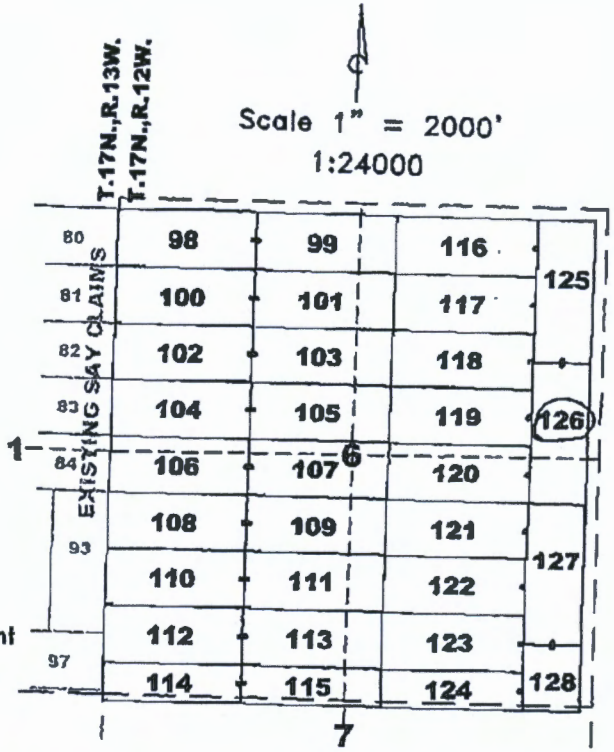
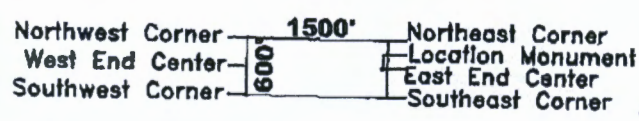
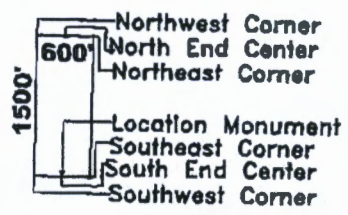


Timothy M. Marsh, Agent for:

Claim Map for SAY Lode Claim

Bell Resources (Nevada) Corporation
4750 North Bonanza Avenue
Tucson, Arizona 85749

Typical Claims



Location Monuments are 10' from end lines.
SAY 114,115,124 are 1500'x400'
SAY 128 is 700'x600'

The above map depicts the SAY 126 lode mining claim, which is located in Section(s) 20 Township 17 North, Range 12 West, Gila and Salt River Meridian, Mohave County, Arizona. The claim corners, end centers, and location monument are marked by 2 inch by 2 inch by 5 foot wooden posts with aluminum tags. The bearings and distances between claim corners are as depicted on the map.

RECEIVED
 STATE OFFICE
 JUL 28 8:05
 PHOENIX, ARIZONA

AMC460891

OFFICIAL RECORDS
OF MOHAVE COUNTY
KRISTI BLAIR,
COUNTY RECORDER



07/21/2020 01:08 PM Fee: \$30.00

PAGE: 1 of 1

Recording requested by:
Bell Resources (Nevada) Corporation

When recorded return to:
Tim Marsh
4750 N. Bonanza Avenue
Tucson, AZ 85749

LOCATION NOTICE FOR LODE MINING CLAIM

NOTICE IS HEREBY GIVEN that the SAY 127 lode mining claim has been located by Bell Resources (Nevada) Corporation, 4750 North Bonanza Avenue, Tucson, Arizona 85749. The general course of this claim is north-south and it is situated in Mohave County, Arizona. This claim is 1500 feet in length and 600 feet in width. This claim runs from the location monument on which this location notice is posted approximately 1490 feet in a northerly direction to the north end line and 10 feet in a southerly direction to the south end line with 300 feet on each side of the monument of location and centerline of the claim. This claim is marked by six monuments, one at each corner and one at the center of each end line of the claim.

The location monument on which this notice is posted is situated within Section 6, Township 17 North, Range 12 West, Gila and Salt River Meridian, Arizona, and this claim occupies the following Quarter Section(s), Section(s), Township(s), and Range(s):

Quarter Section	Section	Township	Range
<u>SE</u>	<u>6</u>	17 North	12 West
_____	_____	17 North	12 West
_____	_____	17 North	12 West
_____	_____	17 North	12 West

The Northeast corner of this claim is approximately 5025 feet East and 3125 feet South of the surveyed Northwest corner of Section 1, Township 17 North, Range 13 West, Gila and Salt River Meridian.

DATED AND POSTED on the ground this 11th day of July, 2020.

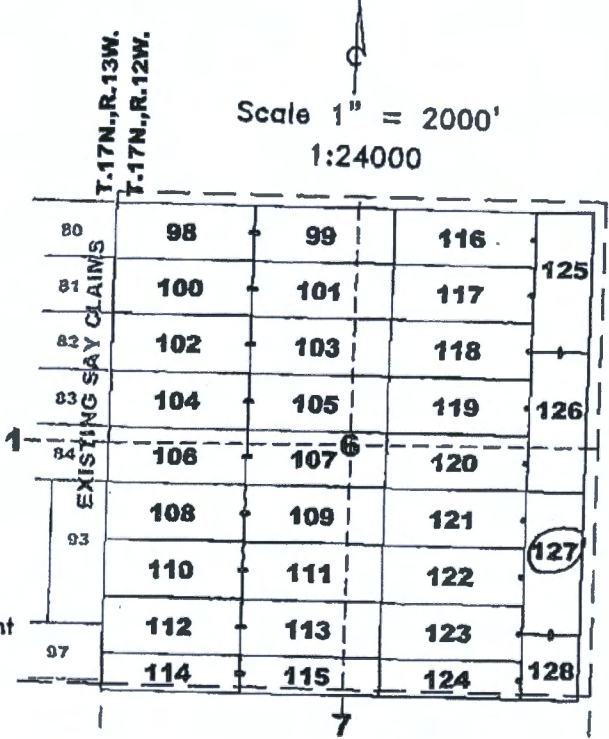
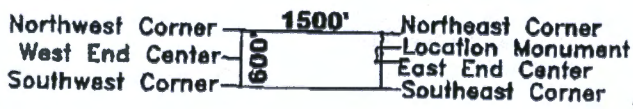
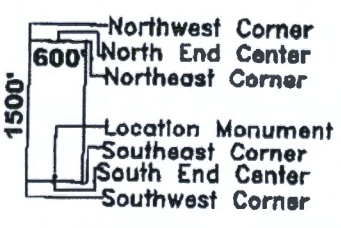
Timothy M. Marsh
Timothy M. Marsh, Agent for:

Claim Map for SAY Lode Claim

Bell Resources (Nevada) Corporation
4750 North Bonanza Avenue
Tucson, Arizona 85749

Scale 1" = 2000'
1:24000

Typical Claims



Location Monuments are 10' from end lines.
SAY 114,115,124 are 1500'x400'
SAY 128 is 700'x600'

The above map depicts the SAY 127 lode mining claim, which is located in Section(s) 6 Township 17 North, Range 12 West, Gila and Salt River Meridian, Mohave County, Arizona. The claim corners, end centers, and location monument are marked by 2 inch by 2 inch by 5 foot wooden posts with aluminum tags. The bearings and distances between claim corners are as depicted on the map.

PHOTOGRAPHED
2020 JUL 28 A 8:05
RECEIVED
STATE OFFICE

AMC460892

Recording requested by:
Bell Resources (Nevada) Corporation

OFFICIAL RECORDS
OF MOHAVE COUNTY
KRISTI BLAIR,
COUNTY RECORDER



When recorded return to:
Tim Marsh
4750 N. Bonanza Avenue
Tucson, AZ 85749

07/21/2020 01:08 PM Fee: \$30.00
PAGE: 1 of 1

LOCATION NOTICE FOR LODE MINING CLAIM

NOTICE IS HEREBY GIVEN that the SAY 128 lode mining claim has been located by Bell Resources (Nevada) Corporation, 4750 North Bonanza Avenue, Tucson, Arizona 85749. The general course of this claim is north-south and it is situated in Mohave County, Arizona. This claim is 700 feet in length and 600 feet in width. This claim runs from the location monument on which this location notice is posted approximately 10 feet in a northerly direction to the north end line and 690 feet in a southerly direction to the south end line with 300 feet on each side of the monument of location and centerline of the claim. This claim is marked by six monuments, one at each corner and one at the center of each end line of the claim.

The location monument on which this notice is posted is situated within Section 6, Township 17 North, Range 12 West, Gila and Salt River Meridian, Arizona, and this claim occupies the following Quarter Section(s), Section(s), Township(s), and Range(s):

Quarter Section	Section	Township	Range
<u>SE</u>	<u>6</u>	17 North	12 West
<u>NE</u>	<u>7</u>	17 North	12 West
---	---	17 North	12 West
---	---	17 North	12 West

The Northeast corner of this claim is approximately 4988 feet East and 4624 feet South of the surveyed Northwest corner of Section 1, Township 17 North, Range 13 West, Gila and Salt River Meridian.

DATED AND POSTED on the ground this
11th day of July, 2020.

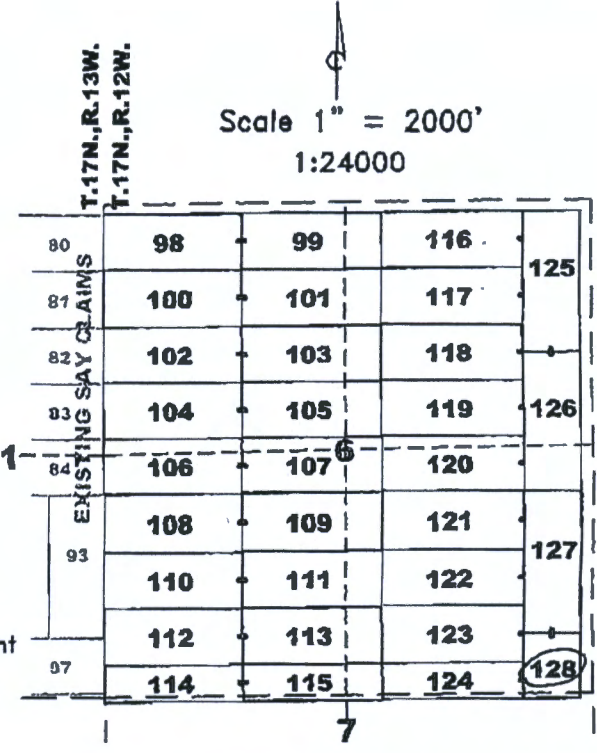
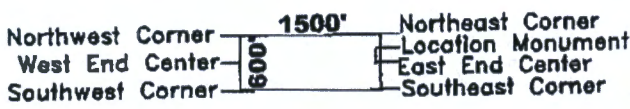
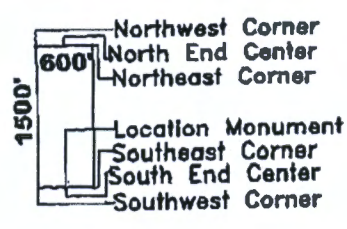
Claim Map for SAY Lode Claim

Timothy M. Marsh
Timothy M. Marsh, Agent for:

Bell Resources (Nevada) Corporation
4750 North Bonanza Avenue
Tucson, Arizona 85749

Scale 1" = 2000'
1:24000

Typical Claims



Location Monuments are 10' from end lines.

SAY 114,115,124 are 1500'x400'
SAY 128 is 700'x600'

The above map depicts the SAY 128 lode mining claim, which is located in Section(s) 6, 7 Township 17 North, Range 12 West, Gila and Salt River Meridian, Mohave County, Arizona. The claim corners, end centers, and location monument are marked by 2 inch by 2 inch by 5 foot wooden posts with aluminum tags. The bearings and distances between claim corners are as depicted on the map.

RECEIVED
 MOHAVE COUNTY RECORDER
 AUG 28 A 8:05
 PHOENIX, ARIZONA

AMC460893

Date and Time Run:
9/3/2020 4:16:14 PM

Page 1 of 1

**DEPARTMENT OF THE INTERIOR
BUREAU OF LAND MANAGEMENT
Case Recordation**

Geographic Report with Land

Disposition is equal to **AUTHORIZED , CANCELLED , EXPIRED , PENDING , REJECTED , RELINQUISHED ,
WITHDRAWN**

and Meridian Township Range Section is equal to 14 0170N 0120W 006

and Admin State is equal to AZ

**NO WARRANTY IS MADE BY BLM
FOR USE OF THE DATA FOR
PURPOSES NOT INTENDED BY BLM**

DEPARTMENT OF THE INTERIOR
BUREAU OF LAND MANAGEMENT
Case Recordation
Geographic Report with Land

Admin State: AZ
Geo State: AZ
Serial Number: AZA 022448PT

Total Case Acres: 42,694.470

Casetype	Case Disp	Mer	Twp	Rng	Sec	Sur Type	Sur Nr	Suf	Subdivision	Pending Action
221006	AUTHORIZED	14	0170N	0120W	006	ALIQ			S2NE, S2NW, F2SW, SE;	
						LGTS			1,2,3,4,5,6,7;	

LR2K Home

CR-24



LR2000 Internal

CR Geographic Report with Land

Download User Guide (pdf)

Purpose: This report produces a geographic listing of case information based on retrieval by Meridian/Township/Range. This report format will display the case type, case disposition, meridian, township, range, section, survey type, survey number, surface management agency, pending actions, serial number, and total case acres.

To refresh the query, do a **Ctrl-R**. It resets the page and clears any criteria fields that may have entries.



No Results

The specified criteria didn't result in any data. This is often caused by applying filters and/or selection steps that are too restrictive or that contain incorrect values. Please check your analysis filters and selection steps, and try again. The filters or selection steps currently being applied are shown below.

Filters

Disposition is equal to **AUTHORIZED, CANCELLED, EXPIRED, PENDING, REJECTED, RELINQUISHED, WITHDRAWN**
and Meridian Township Range Section is equal to **14 0170N 0120W 007**
and Admin State is equal to **AZ**

Return - Refresh

TIMOTHY M
4750 N BONA
TUCSON, AZ 85749

CERTIFIED MAIL



7019 1640 0000 5545 2430



1000



85004

U.S. POSTAGE PAID
FCM LG ENV
TUCSON, AZ
85710
AUG 24, 20
AMOUNT

\$6.15

R2304M113008-12

RECEIVED

2020

2020 AUG 28 A 8:06

PHOENIX, ARIZONA

U.S. Department of Interior
Bureau of Land Management
Records Section
One North Central Avenue
Suite 800
Phoenix, AZ ~~85011~~

85004-4427

FIRST CLASS